

Datasheet for ABIN2733390

TDO2 Protein (Myc-DYKDDDDK Tag)**2** Images[Go to Product page](#)

Overview

Quantity:	20 µg
Target:	TDO2
Origin:	Human
Source:	HEK-293 Cells
Protein Type:	Recombinant
Biological Activity:	Active
Purification tag / Conjugate:	This TDO2 protein is labelled with Myc-DYKDDDDK Tag.
Application:	Antibody Production (AbP), Functional Studies (Func), Protein Interaction (PI), Standard (STD)

Product Details

Specificity:	Optimal preservation of protein structure, post-translational modifications and functions.
Characteristics:	<ul style="list-style-type: none">• Recombinant human TDO2 / TDO protein expressed in HEK293 cells.• Produced with end-sequenced ORF clone• Tested for bioactivity.
Purity:	> 80 % as determined by SDS-PAGE and Coomassie blue staining
Biological Activity Comment:	The specific activity of TDO2 was determined by monitoring Kynurenine formation from the N-formylkynurenine based on the absorbance at 492nm. The N-formylkynurenine was produced from a conversion of tryptophan with TDO2. The reactions were carried out at 37°C for 40min in 100ul of the reaction volume containing 200mM PBS, pH7.5, 1mM ascorbic acid, and 1.25mM L-tryptophan as the substrate with various amounts of TDO2. The reaction was terminated by adding 50ul of 30% (w/v) trichloroacetic acid. The sample was further incubated for 30min at

Product Details

60°C and centrifuged at 12000 rpm for 15 min. The supernatant was used to mix with an equal volume of Ehrlich's reagent (2% p-dimethylaminobenzaldehyde in glacial acetic acid) to measure the absorbance at 492 nm after 10min incubation

Target Details

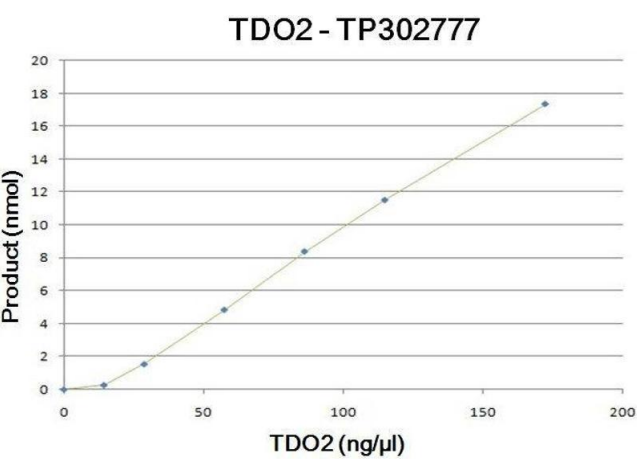
Target:	TD02
Alternative Name:	Tdo2,tdo (TD02 Products)
Background:	This gene encodes a heme enzyme that plays a critical role in tryptophan metabolism by catalyzing the first and rate-limiting step of the kynurenine pathway. Increased activity of the encoded protein and subsequent kynurenine production may also play a role in cancer through the suppression of antitumor immune responses, and single nucleotide polymorphisms in this gene may be associated with autism.
Molecular Weight:	47.7 kDa
NCBI Accession:	NP_005642

Application Details

Application Notes:	Recombinant human proteins can be used for: Native antigens for optimized antibody production Positive controls in ELISA and other antibody assays Protein-protein interaction In vitro biochemical assays and cell-based functional assays
Comment:	The tag is located at the C-terminal.
Restrictions:	For Research Use only

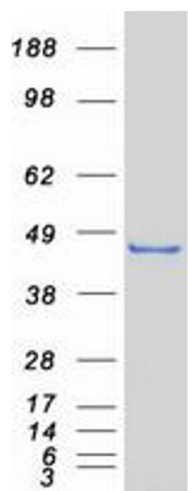
Handling

Concentration:	> 50 µg/mL
Buffer:	25 mM Tris.HCl, pH 7.3, 100 mM glycine, 10 % glycerol.
Storage:	-80 °C
Storage Comment:	Store at -80°C. Thaw on ice, aliquot to individual single-use tubes, and then re-freeze immediately. Only 2-3 freeze thaw cycles are recommended.



Activity Assay

Image 1. Bioactivity measured with Activity Assay



Western Blotting

Image 2. Validation with Western Blot