

Datasheet for ABIN2733397
NR4A3 Protein (His tag)[Go to Product page](#)

1 Image

Overview

Quantity:	50 µg
Target:	NR4A3
Origin:	Human
Source:	Escherichia coli (E. coli)
Protein Type:	Recombinant
Purification tag / Conjugate:	This NR4A3 protein is labelled with His tag.
Application:	Antibody Production (AbP), Standard (STD)

Product Details

Characteristics:	<ul style="list-style-type: none">• Recombinant human TEC (full length, N-term HIS tag) protein expressed in E. coli.• Produced with end-sequenced ORF clone
Purity:	> 80 % as determined by SDS-PAGE and Coomassie blue staining

Target Details

Target:	NR4A3
Alternative Name:	Tec (NR4A3 Products)
Background:	The protein encoded by this gene belongs to the Tec family of non-receptor protein-tyrosine kinases containing a pleckstrin homology domain. Tec family kinases are involved in the intracellular signaling mechanisms of cytokine receptors, lymphocyte surface antigens, heterotrimeric G-protein coupled receptors, and integrin molecules. They are also key players in the regulation of the immune functions. Tec kinase is an integral component of T cell signaling

Target Details

	and has a distinct role in T cell activation. This gene may be associated with myelodysplastic syndrome.
Molecular Weight:	73.4 kDa
NCBI Accession:	NP_003206
Pathways:	Fc-epsilon Receptor Signaling Pathway , Nuclear Receptor Transcription Pathway , Steroid Hormone Mediated Signaling Pathway

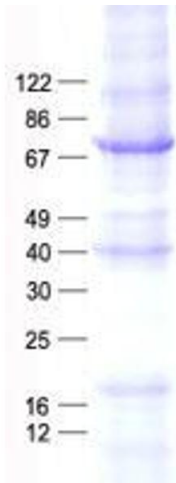
Application Details

Application Notes:	Recombinant human proteins can be used for: Native antigens for optimized antibody production Positive controls in ELISA and other antibody assays
Comment:	The tag is located at the N-terminal.
Restrictions:	For Research Use only

Handling

Concentration:	50 µg/mL
Buffer:	50 mM Tris,8M Urea, pH 8.0.
Storage:	-80 °C
Storage Comment:	Store at -80°C. Thaw on ice, aliquot to individual single-use tubes, and then re-freeze immediately. Only 2-3 freeze thaw cycles are recommended.

Images



Western Blotting

Image 1. Validation with Western Blot