



[Go to Product page](#)

Datasheet for ABIN2733490

anti-Transferrin Receptor 2 antibody

3 Images

Overview

Quantity:	0.1 mL
Target:	Transferrin Receptor 2 (TFR2)
Reactivity:	Human, Mouse, Rat, Monkey
Host:	Mouse
Clonality:	Monoclonal
Application:	Western Blotting (WB), Immunofluorescence (IF), Flow Cytometry (FACS)

Product Details

Immunogen:	Full length human recombinant protein of human TFR2(NP_003218) produced in HEK293T cell.
Clone:	2B4
Isotype:	IgG2a
Characteristics:	Homo sapiens transferrin receptor 2 (TFR2), transcript variant 1
Purification:	Purified from mouse ascites fluids by affinity chromatography

Target Details

Target:	Transferrin Receptor 2 (TFR2)
Alternative Name:	TFR2 (TFR2 Products)
Background:	This gene encodes a single-pass type II membrane protein, which is a member of the transferrin receptor-like family. This protein mediates cellular uptake of transferrin-bound iron, and may be involved in iron metabolism, hepatocyte function and erythrocyte differentiation. Mutations in this gene have been associated with hereditary hemochromatosis type III.

Target Details

Alternatively spliced transcript variants encoding different isoforms have been described for this gene.

Molecular Weight: 88.6 kDa

Gene ID: 7036

NCBI Accession: [NM_003227](#)

HGNC: 7036

Pathways: [Transition Metal Ion Homeostasis](#)

Application Details

Application Notes: WB 1:500~2000, IF 1:100, FLOW 1:100,

Comment: The concentration of the product may vary between different lots.

Restrictions: For Research Use only

Handling

Format: Liquid

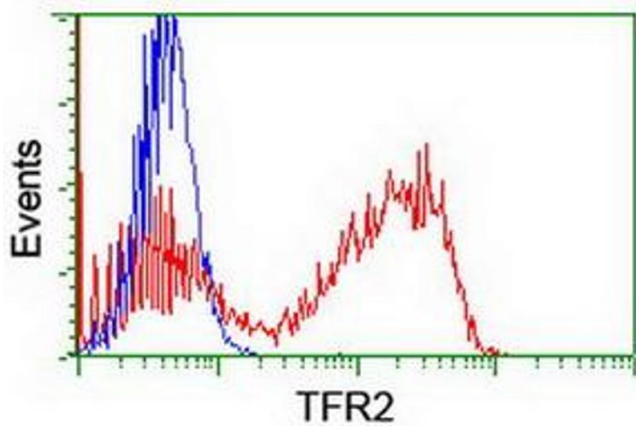
Concentration: 0.5-1.0 mg/mL

Buffer: PBS (PH 7.3) containing 1 % BSA, 50 % glycerol and 0.02 % sodium azide.

Preservative: Sodium azide

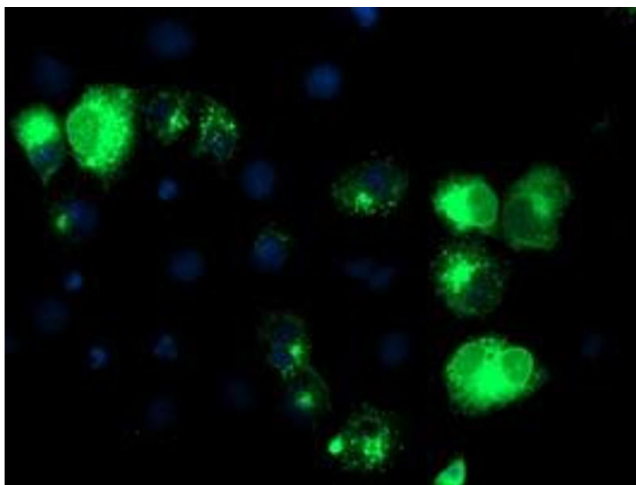
Precaution of Use: This product contains sodium azide: a POISONOUS AND HAZARDOUS SUBSTANCE which should be handled by trained staff only.

Storage: -20 °C



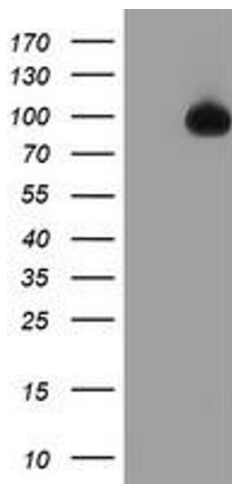
Flow Cytometry

Image 1. HEK293T cells transfected with either RC220060 overexpress plasmid (Red) or empty vector control plasmid (Blue) were immunostained by anti-TFR2 antibody (ABIN2455711), and then analyzed by flow cytometry.



Immunofluorescence

Image 2. Anti-TFR2 mouse monoclonal antibody (ABIN2455711) immunofluorescent staining of COS7 cells transiently transfected by pCMV6-ENTRY TFR2 (RC220060).



Western Blotting

Image 3. HEK293T cells were transfected with the pCMV6-ENTRY control (Left lane) or pCMV6-ENTRY TFR2 (Right lane) cDNA for 48 hrs and lysed. Equivalent amounts of cell lysates (5 μ g per lane) were separated by SDS-PAGE and immunoblotted with anti-TFR2.