

Datasheet for ABIN2733539

**TH1-Like Protein (TH1L) (Transcript Variant 1) (Myc-DYKDDDDK Tag)**[Go to Product page](#)**1** Image

## Overview

Quantity:	20 µg
Target:	TH1-Like (TH1L)
Protein Characteristics:	Transcript Variant 1
Origin:	Human
Source:	HEK-293 Cells
Protein Type:	Recombinant
Purification tag / Conjugate:	This TH1-Like protein is labelled with Myc-DYKDDDDK Tag.
Application:	Antibody Production (AbP), Standard (STD)

## Product Details

Characteristics:	<ul style="list-style-type: none"><li>• Recombinant human TH1L / NELFD (transcript variant 1) protein expressed in HEK293 cells.</li><li>• Produced with end-sequenced ORF clone</li></ul>
Purity:	> 80 % as determined by SDS-PAGE and Coomassie blue staining

## Target Details

Target:	TH1-Like (TH1L)
Alternative Name:	Th1l,nelfd ( <a href="#">TH1L Products</a> )
Background:	The NELF complex of proteins interacts with the DSIF protein complex to repress transcriptional elongation by RNA polymerase II. The protein encoded by this gene is an essential part of the NELF complex. Alternative translation initiation site usage results in the formation of two isoforms with different N-termini.

## Target Details

Molecular Weight:	66.1 kDa
NCBI Accession:	<a href="#">NP_945327</a>

## Application Details

Application Notes:	Recombinant human proteins can be used for: Native antigens for optimized antibody production Positive controls in ELISA and other antibody assays
--------------------	--

Comment:	The tag is located at the C-terminal.
----------	---------------------------------------

Restrictions:	For Research Use only
---------------	-----------------------

## Handling

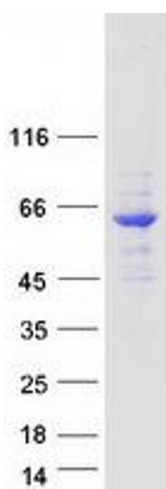
Concentration:	50 µg/mL
----------------	----------

Buffer:	25 mM Tris.HCl, pH 7.3, 100 mM glycine, 10 % glycerol.
---------	--

Storage:	-80 °C
----------	--------

Storage Comment:	Store at -80°C. Thaw on ice, aliquot to individual single-use tubes, and then re-freeze immediately. Only 2-3 freeze thaw cycles are recommended.
------------------	---

## Images



### Western Blotting

**Image 1.** Validation with Western Blot