

Datasheet for ABIN2733544

**THAP5 Protein (His tag)**[Go to Product page](#)**1** Image

## Overview

|                               |  |
|-------------------------------|--|
| Quantity:                     | 50 µg  |
| Target:                       | THAP5  |
| Origin:                       | Human  |
| Source:                       | Escherichia coli (E. coli)                   |
| Protein Type:                 | Recombinant                                  |
| Purification tag / Conjugate: | This THAP5 protein is labelled with His tag. |
| Application:                  | Antibody Production (AbP), Standard (STD)    |

## Product Details

|                  |   |
|------------------|---|
| Characteristics: | <ul style="list-style-type: none"><li>• Recombinant human THAP5 (full length, N-term HIS tag) protein expressed in E. coli.</li><li>• Produced with end-sequenced ORF clone</li></ul> |
| Purity:          | > 80 % as determined by SDS-PAGE and Coomassie blue staining  |

## Target Details

|                   |  |
|-------------------|--|
| Target:           | THAP5                                    |
| Alternative Name: | Thap5 ( <a href="#">THAP5 Products</a> ) |
| Molecular Weight: | 26.4 kDa                                 |
| NCBI Accession:   | <a href="#">NP_872335</a>                |

## Application Details

Application Notes: Recombinant human proteins can be used for:  
Native antigens for optimized antibody production  
Positive controls in ELISA and other antibody assays

Comment: The tag is located at the N-terminal.

Restrictions: For Research Use only

## Handling

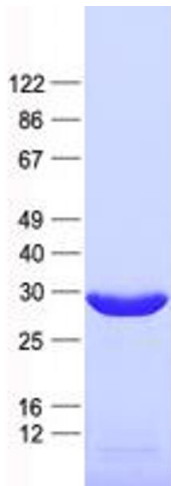
Concentration: 50 µg/mL

Buffer: 25 mM Tris, pH 8.0, 150 mM NaCl, 10 % glycerol, 1 % Sarkosyl. Store at -80C. Avoid repeated freeze-thaw cycles. Stable for at least 3 months from receipt of products under proper storage and handling conditions.

Storage: -80 °C

Storage Comment: Store at -80°C. Thaw on ice, aliquot to individual single-use tubes, and then re-freeze immediately. Only 2-3 freeze thaw cycles are recommended.

## Images



### Western Blotting

**Image 1.** Validation with Western Blot