



## Datasheet for ABIN2733596 THRA Protein (DYKDDDDK Tag)



[Go to Product page](#)

### 1 Image

#### Overview

Quantity:	20 µg
Target:	THRA
Origin:	Human
Source:	Insect cells (Sf9)
Protein Type:	Recombinant
Purification tag / Conjugate:	This THRA protein is labelled with DYKDDDDK Tag.
Application:	Antibody Production (AbP), Standard (STD)

#### Product Details

Characteristics:	<ul style="list-style-type: none"><li>• Recombinant human THRA / ERBA1 (full length, C-term DDK tag) protein expressed in Sf9 cells.</li><li>• Produced with end-sequenced ORF clone</li></ul>
Purity:	> 80 % as determined by SDS-PAGE and Coomassie blue staining

#### Target Details

Target:	THRA
Alternative Name:	Thra,erba1 ( <a href="#">THRA Products</a> )
Background:	The protein encoded by this gene is a nuclear hormone receptor for triiodothyronine. It is one of the several receptors for thyroid hormone, and has been shown to mediate the biological activities of thyroid hormone. Knockout studies in mice suggest that the different receptors, while having certain extent of redundancy, may mediate different functions of thyroid hormone.

## Target Details

---

Alternatively spliced transcript variants encoding distinct isoforms have been reported.

Molecular Weight: 55 kDa

NCBI Accession: [NP\\_003241](#)

Pathways: [Nuclear Receptor Transcription Pathway](#), [Steroid Hormone Mediated Signaling Pathway](#), [Sensory Perception of Sound](#), [Cellular Response to Molecule of Bacterial Origin](#), [Regulation of Lipid Metabolism by PPARalpha](#), [Regulation of Muscle Cell Differentiation](#), [Maintenance of Protein Location](#), [Skeletal Muscle Fiber Development](#)

## Application Details

---

Application Notes: Recombinant human proteins can be used for:  
Native antigens for optimized antibody production  
Positive controls in ELISA and other antibody assays

Comment: The tag is located at the C-terminal.

Restrictions: For Research Use only

## Handling

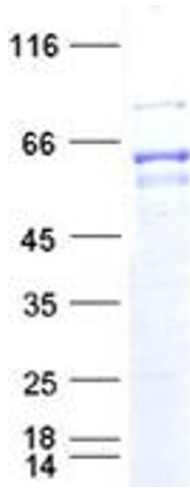
---

Concentration: 50 µg/mL

Buffer: 50 mM Tris-HCl pH 8.0, 150 mM NaCl, 20 % glycerol. Store at -80C. Avoid repeated freeze-thaw cycles. Stable for at least 3 months from receipt of products under proper storage and handling conditions.

Storage: -80 °C

Storage Comment: Store at -80°C. Thaw on ice, aliquot to individual single-use tubes, and then re-freeze immediately. Only 2-3 freeze thaw cycles are recommended.



### Western Blotting

**Image 1.** Validation with Western Blot