

Datasheet for ABIN2733730

TJP3 Protein (Myc-DYKDDDDK Tag)[Go to Product page](#)**1** Image

Overview

Quantity:	20 µg
Target:	TJP3
Origin:	Human
Source:	HEK-293 Cells
Protein Type:	Recombinant
Purification tag / Conjugate:	This TJP3 protein is labelled with Myc-DYKDDDDK Tag.
Application:	Antibody Production (AbP), Standard (STD)

Product Details

Characteristics:	<ul style="list-style-type: none">• Recombinant human Tight junction protein 3 (zona occludens 3) (TJP3) protein expressed in HEK293 cells.• Produced with end-sequenced ORF clone
Purity:	> 80 % as determined by SDS-PAGE and Coomassie blue staining

Target Details

Target:	TJP3
Abstract:	TJP3 Products
Background:	The protein encoded by this gene is a member of the membrane-associated guanylate kinase-like (MAGUK) protein family which is characterized by members having multiple PDZ domains, a single SH3 domain, and a single guanylate kinase-like (GUK)-domain. In addition, members of the zonula occludens protein subfamily have an acidic domain, a basic arginine-rich region, and

Target Details

a proline-rich domain. The protein encoded by this gene plays a role in the linkage between the actin cytoskeleton and tight-junctions and also sequesters cyclin D1 at tight junctions during mitosis. Alternative splicing results in multiple transcript variants encoding distinct isoforms. This gene has a partial pseudogene on chromosome 1.

Molecular Weight: 104.6 kDa

NCBI Accession: [NP_055243](#)

Application Details

Application Notes: Recombinant human proteins can be used for:
Native antigens for optimized antibody production
Positive controls in ELISA and other antibody assays

Comment: The tag is located at the C-terminal.

Restrictions: For Research Use only

Handling

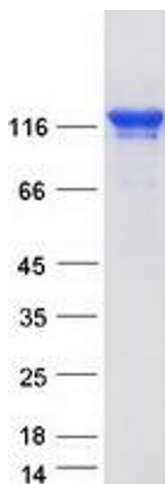
Concentration: 50 µg/mL

Buffer: 25 mM Tris.HCl, pH 7.3, 100 mM glycine, 10 % glycerol.

Storage: -80 °C

Storage Comment: Store at -80°C. Thaw on ice, aliquot to individual single-use tubes, and then re-freeze immediately. Only 2-3 freeze thaw cycles are recommended.

Images



Western Blotting

Image 1. Validation with Western Blot