

Datasheet for ABIN2733922

Thymopoietin Protein (TMPO) (Transcript Variant 2) (His tag)[Go to Product page](#)**1** Image

Overview

Quantity:	10 µg
Target:	Thymopoietin (TMPO)
Protein Characteristics:	Transcript Variant 2
Origin:	Human
Source:	Escherichia coli (E. coli)
Protein Type:	Recombinant
Purification tag / Conjugate:	This Thymopoietin protein is labelled with His tag.
Application:	Antibody Production (AbP), Standard (STD)

Product Details

Characteristics:	<ul style="list-style-type: none">• Recombinant human TMPO / LAP2 (transcript variant 2) protein expressed in E. coli.• Produced with end-sequenced ORF clone
Purity:	> 95 % as determined by SDS-PAGE and Coomassie blue staining
Endotoxin Level:	< 0.1 EU per µg protein as determined by LAL test

Target Details

Target:	Thymopoietin (TMPO)
Alternative Name:	Tmpo,lap2 (TMPO Products)
Background:	The protein encoded by this gene resides in the nucleus and may play a role in the assembly of the nuclear lamina, and thus help maintain the structural organization of the nuclear envelope.

Target Details

It may function as a receptor for the attachment of lamin filaments to the inner nuclear membrane. Mutations in this gene are associated with dilated cardiomyopathy. Alternatively spliced transcript variants encoding different isoforms have been noted for this gene.

Molecular Weight:	21.6 kDa
NCBI Accession:	NP_001027454

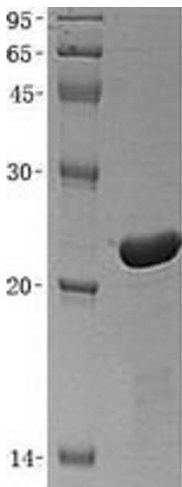
Application Details

Application Notes:	Recombinant human proteins can be used for: Native antigens for optimized antibody production Positive controls in ELISA and other antibody assays
Comment:	The tag is located at the N-terminal.
Restrictions:	For Research Use only

Handling

Buffer:	Lyophilized from a 0.2 µM filtered solution of 20 mM Phosphate buffer, 150 mM NaCl, pH 7.4. Stable for at least 6 months from date of receipt under proper storage and handling conditions.
Storage:	-80 °C
Storage Comment:	Store at -80°C. Thaw on ice, aliquot to individual single-use tubes, and then re-freeze immediately. Only 2-3 freeze thaw cycles are recommended.

Images



Western Blotting

Image 1. Validation with Western Blot