

Datasheet for ABIN2733932

**TMPRSS6 Protein (DYKDDDDK Tag)**[Go to Product page](#)**1** Image

## Overview

|                               |   |
|-------------------------------|---|
| Quantity:                     | 20 µg   |
| Target:                       | TMPRSS6   |
| Origin:                       | Human   |
| Source:                       | Insect cells (Sf9)                                  |
| Protein Type:                 | Recombinant   |
| Purification tag / Conjugate: | This TMPRSS6 protein is labelled with DYKDDDDK Tag. |
| Application:                  | Antibody Production (AbP), Standard (STD)           |

## Product Details

|                  |  |
|------------------|--|
| Characteristics: | <ul style="list-style-type: none"><li>• Recombinant human TMPRSS6 (C-term DDK tag) protein expressed in Sf9 cells.</li><li>• Produced with end-sequenced ORF clone</li></ul> |
| Purity:          | > 80 % as determined by SDS-PAGE and Coomassie blue staining   |

## Target Details

|                   |  |
|-------------------|--|
| Target:           | TMPRSS6  |
| Alternative Name: | Tmprss6 ( <a href="#">TMPRSS6 Products</a> )   |
| Background:       | The protein encoded by this gene is a type II transmembrane serine proteinase that is found attached to the cell surface. The encoded protein may be involved in matrix remodeling processes in the liver. Alternative splicing results in multiple transcript variants. |
| Molecular Weight: | 81.8 kDa   |

## Target Details

|                 |  |
|-----------------|--|
| NCBI Accession: | <a href="#">NP_705837</a>                        |
| Pathways:       | <a href="#">Transition Metal Ion Homeostasis</a> |

## Application Details

|                    |  |
|--------------------|--|
| Application Notes: | Recombinant human proteins can be used for:<br>Native antigens for optimized antibody production<br>Positive controls in ELISA and other antibody assays |
|--------------------|--|

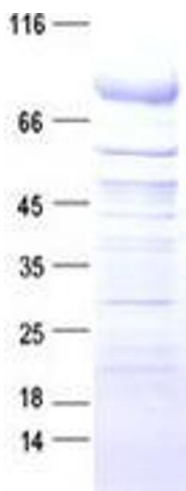
|          |                                       |
|----------|---------------------------------------|
| Comment: | The tag is located at the C-terminal. |
|----------|---------------------------------------|

|               |                       |
|---------------|-----------------------|
| Restrictions: | For Research Use only |
|---------------|-----------------------|

## Handling

|                  |   |
|------------------|---|
| Concentration:   | 50 µg/mL  |
| Buffer:          | 50 mM Tris-HCl, pH 8.0, 100 mM glycine, 10 % glycerol.  |
| Storage:         | -80 °C  |
| Storage Comment: | Store at -80°C. Thaw on ice, aliquot to individual single-use tubes, and then re-freeze immediately. Only 2-3 freeze thaw cycles are recommended. |

## Images



### Western Blotting

**Image 1.** Validation with Western Blot