

Datasheet for ABIN2733938

LTA Protein (Transcript Variant 2)



[Go to Product page](#)

1 Image

Overview

Quantity:	20 µg
Target:	LTA
Protein Characteristics:	Transcript Variant 2
Origin:	Chemical
Source:	Escherichia coli (E. coli)
Protein Type:	Recombinant
Biological Activity:	Active
Application:	Functional Studies (Func), Protein Interaction (PI), Antibody Production (AbP), Standard (STD)

Product Details

Specificity:	Optimal preservation of protein structure, post-translational modifications and functions.
Characteristics:	<ul style="list-style-type: none"> • Recombinant human TNF-beta / Lymphotoxin-alpha (transcript variant 2) protein expressed in E. coli. • Produced with end-sequenced ORF clone • Tested for bioactivity.
Purity:	> 95 % as determined by SDS-PAGE and Coomassie blue staining
Endotoxin Level:	Endotoxin level is <0.1 ng/µg of protein (<1EU/µg).
Biological Activity Comment:	ED50 as determined by the cytolysis of murine L929 cells in the presence of Actinomycin-D is less than or equal to 0.05 ng/ml, corresponding to a specific activity of > 2 x 10 ⁷ units/mg.

Target Details

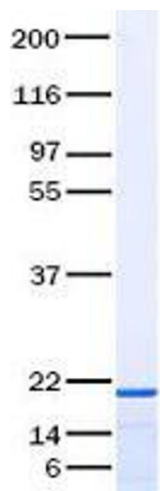
Target:	LTA
Alternative Name:	Tnf-Beta,lymphotoxin-alpha (LTA Products)
Target Type:	Chemical
Background:	Cytokine that in its homotrimeric form binds to TNFRSF1A/TNFR1, TNFRSF1B/TNFR and TNFRSF14/HVEM. In its heterotrimeric form with LTB binds to TNFRSF3/LTBR. Lymphotoxin is produced by lymphocytes and cytotoxic for a wide range of tumor cells in vitro and in vivo. [UniProtKB/Swiss-Prot Function]
Molecular Weight:	18.6 kDa
NCBI Accession:	NP_000586
Pathways:	Regulation of Leukocyte Mediated Immunity , Positive Regulation of Immune Effector Process

Application Details

Application Notes:	Recombinant human proteins can be used for: Native antigens for optimized antibody production Positive controls in ELISA and other antibody assays Protein-protein interaction In vitro biochemical assays and cell-based functional assays
Restrictions:	For Research Use only

Handling

Buffer:	Lyophilized from a 0.2 µM filtered solution of 20 mM phosphate buffer,100 mM NaCl, pH 7.2
Handling Advice:	Resuspend the protein in the desired concentration in proper buffer
Storage:	-80 °C
Storage Comment:	Store at -80°C. Thaw on ice, aliquot to individual single-use tubes, and then re-freeze immediately. Only 2-3 freeze thaw cycles are recommended.



Western Blotting

Image 1. Validation with Western Blot