

Datasheet for ABIN2734117

**TRAPPC2 Protein (Transcript Variant 1) (Myc-DYKDDDDK Tag)**[Go to Product page](#)**1** Image

## Overview

Quantity:	20 µg
Target:	TRAPPC2
Protein Characteristics:	Transcript Variant 1
Origin:	Human
Source:	HEK-293 Cells
Protein Type:	Recombinant
Purification tag / Conjugate:	This TRAPPC2 protein is labelled with Myc-DYKDDDDK Tag.
Application:	Antibody Production (AbP), Standard (STD)

## Product Details

Characteristics:	<ul style="list-style-type: none"><li>• Recombinant human Trafficking protein particle complex 2 (TRAPPC2), transcript variant 1 (transcript variant 1) protein expressed in HEK293 cells.</li><li>• Produced with end-sequenced ORF clone</li></ul>
Purity:	> 80 % as determined by SDS-PAGE and Coomassie blue staining

## Target Details

Target:	TRAPPC2
Abstract:	<a href="#">TRAPPC2 Products</a>
Background:	The protein encoded by this gene is thought to be part of a large multi-subunit complex involved in the targeting and fusion of endoplasmic reticulum-to-Golgi transport vesicles with their acceptor compartment. In addition, the encoded protein can bind c-myc promoter-binding

## Target Details

protein 1 and block its transcriptional repression capability. Mutations in this gene are a cause of spondyloepiphyseal dysplasia tarda (SEDТ). A processed pseudogene of this gene is located on chromosome 19, and other pseudogenes are found on chromosomes 8 and Y. Alternatively spliced transcript variants have been found for this gene.

Molecular Weight:	16.3 kDa
NCBI Accession:	<a href="#">NP_001011658</a>

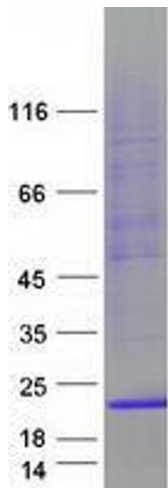
## Application Details

Application Notes:	Recombinant human proteins can be used for: Native antigens for optimized antibody production Positive controls in ELISA and other antibody assays
Comment:	The tag is located at the C-terminal.
Restrictions:	For Research Use only

## Handling

Concentration:	50 µg/mL
Buffer:	25 mM Tris.HCl, pH 7.3, 100 mM glycine, 10 % glycerol.
Storage:	-80 °C
Storage Comment:	Store at -80°C. Thaw on ice, aliquot to individual single-use tubes, and then re-freeze immediately. Only 2-3 freeze thaw cycles are recommended.

## Images



### Western Blotting

**Image 1.** Validation with Western Blot