



[Go to Product page](#)

Datasheet for ABIN2734129

## NFE4 Protein (Myc-DYKDDDDK Tag)

### 1 Image

#### Overview

Quantity:	20 µg
Target:	NFE4
Origin:	Human
Source:	HEK-293 Cells
Protein Type:	Recombinant
Purification tag / Conjugate:	This NFE4 protein is labelled with Myc-DYKDDDDK Tag.
Application:	Antibody Production (AbP), Standard (STD)

#### Product Details

Characteristics:	<ul style="list-style-type: none"><li>• Recombinant human Transcription factor NF-E4 (NF-E4) protein expressed in HEK293 cells.</li><li>• Produced with end-sequenced ORF clone</li></ul>
Purity:	> 80 % as determined by SDS-PAGE and Coomassie blue staining

#### Target Details

Target:	NFE4
Alternative Name:	Transcription Factor Nf-e4 (Nf-e4) ( <a href="#">NFE4 Products</a> )
Background:	The erythroid-specific protein encoded by this gene, and the ubiquitous transcription factor CP2, form the stage selector protein (SSP) complex, which is involved in preferential expression of the gamma-globin genes in fetal erythroid cells. Alternate use of an in-frame upstream non-AUG (CUG) translation initiation codon, and a downstream AUG codon, results in two isoforms. While the long isoform (22 kDa) acts as an activator, the short isoform (14 kDa) has been

## Target Details

shown to repress gamma-globin gene expression. This gene is located in an intron of the FBXL13 gene on the opposite strand.

Molecular Weight: 18.9 kDa

NCBI Accession: [NP\\_001078855](#)

## Application Details

Application Notes: Recombinant human proteins can be used for:  
Native antigens for optimized antibody production  
Positive controls in ELISA and other antibody assays

Comment: The tag is located at the C-terminal.

Restrictions: For Research Use only

## Handling

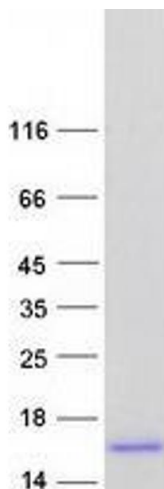
Concentration: 50 µg/mL

Buffer: 25 mM Tris.HCl, pH 7.3, 100 mM glycine, 10 % glycerol.

Storage: -80 °C

Storage Comment: Store at -80°C. Thaw on ice, aliquot to individual single-use tubes, and then re-freeze immediately. Only 2-3 freeze thaw cycles are recommended.

## Images



### Western Blotting

**Image 1.** Validation with Western Blot