



[Go to Product page](#)

Datasheet for ABIN2734315

## anti-ZFP36 antibody

### 3 Images

#### Overview

Quantity:	0.1 mL
Target:	ZFP36
Reactivity:	Human
Host:	Mouse
Clonality:	Monoclonal
Conjugate:	This ZFP36 antibody is un-conjugated
Application:	Western Blotting (WB), Flow Cytometry (FACS), Immunohistochemistry (IHC), Immunofluorescence (IF)

#### Product Details

Immunogen:	Full length human recombinant protein of human ZFP36 (NP_003398) produced in HEK293T cell.
Clone:	8B5
Isotype:	IgG1
Purification:	Purified from mouse ascites fluids by affinity chromatography

#### Target Details

Target:	ZFP36
Alternative Name:	ZFP36 ( <a href="#">ZFP36 Products</a> )
Molecular Weight:	33.8 kDa

## Target Details

Gene ID: 7538

NCBI Accession: [NM\\_003407](#)

HGNC: 7538

## Application Details

Application Notes: WB 1:1000, IHC 1:50, IF 1:100, FLOW 1:100,

Comment: The concentration of the product may vary between different lots.

Restrictions: For Research Use only

## Handling

Format: Liquid

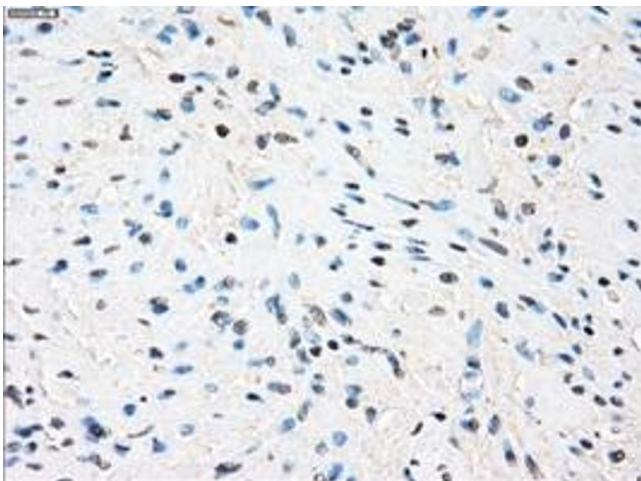
Concentration: 0.5-1.0 mg/mL

Buffer: PBS (pH 7.3) containing 1 % BSA, 50 % glycerol and 0.02 % sodium azide.

Preservative: Sodium azide

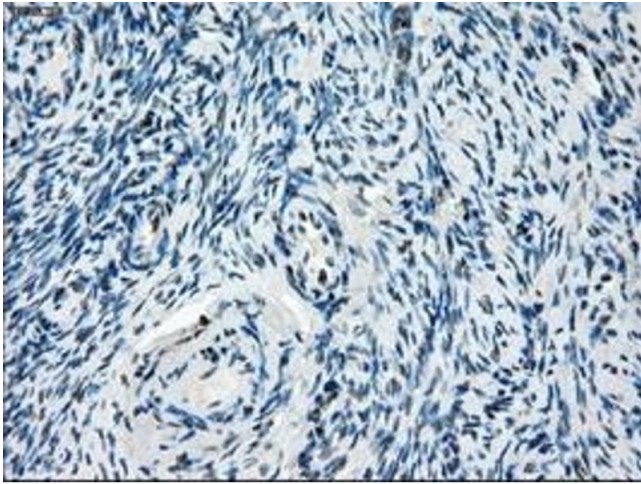
Precaution of Use: This product contains sodium azide: a POISONOUS AND HAZARDOUS SUBSTANCE which should be handled by trained staff only.

## Images



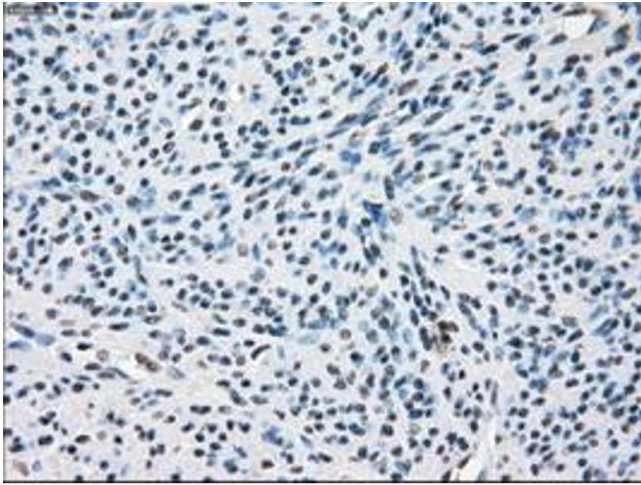
### Immunohistochemistry

**Image 1.** Immunohistochemical staining of paraffin-embedded Ovary tissue using anti-ZFP36 mouse monoclonal antibody. (ABIN2453800, Dilution 1:50)



#### Immunohistochemistry

**Image 2.** Immunohistochemical staining of paraffin-embedded colon tissue using anti-ZFP36 mouse monoclonal antibody. (ABIN2453800, Dilution 1:50)



#### Immunohistochemistry

**Image 3.** Immunohistochemical staining of paraffin-embedded Adenocarcinoma of colon tissue using anti-ZFP36 mouse monoclonal antibody. (ABIN2453800, Dilution 1:50)