

Datasheet for ABIN2734324

**anti-ZFP36 antibody**

3 Images

[Go to Product page](#)

## Overview

Quantity:	0.1 mL
Target:	ZFP36
Reactivity:	Human
Host:	Mouse
Clonality:	Monoclonal
Conjugate:	This ZFP36 antibody is un-conjugated
Application:	Western Blotting (WB), Flow Cytometry (FACS), Immunofluorescence (IF)

## Product Details

Immunogen:	Full length human recombinant protein of human ZFP36 (NP_003898) produced in HEK293T cell.
Clone:	1C8
Isotype:	IgG2a
Characteristics:	Homo sapiens zinc finger protein 36, C3H type, homolog (mouse) (ZFP36)
Purification:	Purified from mouse ascites fluids by affinity chromatography

## Target Details

Target:	ZFP36
Alternative Name:	ZFP36 ( <a href="#">ZFP36 Products</a> )
Molecular Weight:	33.8 kDa

## Target Details

Gene ID: 7538

NCBI Accession: [NM\\_003407](#)

HGNC: 7538

## Application Details

Application Notes: WB 1:500~2000, IF 1:100, FLOW 1:100

Comment: The concentration of the product may vary between different lots.

Restrictions: For Research Use only

## Handling

Format: Liquid

Concentration: 0.5-1.0 mg/mL

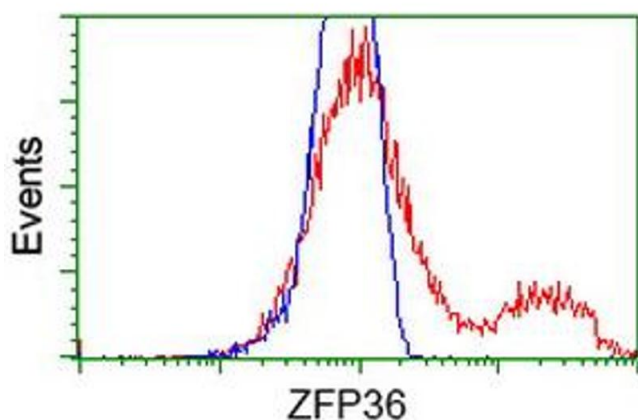
Buffer: PBS (PH 7.3) containing 1 % BSA, 50 % glycerol and 0.02 % sodium azide.

Preservative: Sodium azide

Precaution of Use: This product contains sodium azide: a POISONOUS AND HAZARDOUS SUBSTANCE which should be handled by trained staff only.

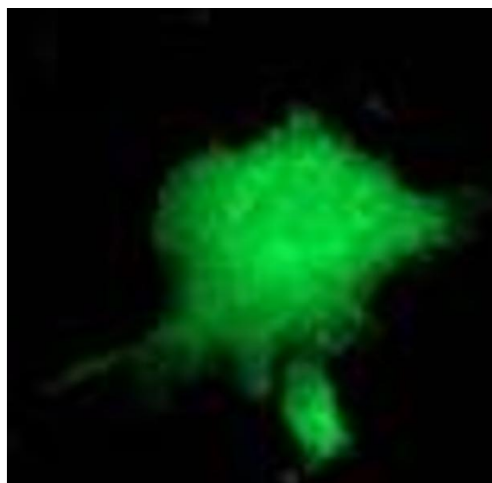
Storage: -20 °C

## Images



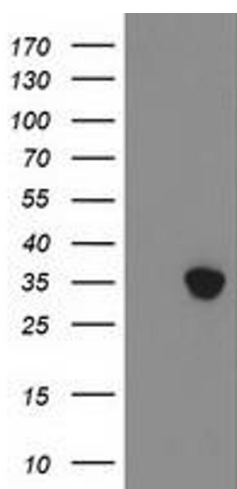
### Flow Cytometry

**Image 1.** HEK293T cells transfected with either RC202049 overexpress plasmid (Red) or empty vector control plasmid (Blue) were immunostained by anti-ZFP36 antibody (ABIN2454211), and then analyzed by flow cytometry.



#### Immunofluorescence

**Image 2.** Anti-ZFP36 mouse monoclonal antibody (ABIN2454211) immunofluorescent staining of COS7 cells transiently transfected by pCMV6-ENTRY ZFP36 (RC202049).



#### Western Blotting

**Image 3.** HEK293T cells were transfected with the pCMV6-ENTRY control (Left lane) or pCMV6-ENTRY ZFP36 (Right lane) cDNA for 48 hrs and lysed. Equivalent amounts of cell lysates (5 µg per lane) were separated by SDS-PAGE and immunoblotted with anti-ZFP36.