

Datasheet for ABIN2734329

TRKA Protein (DYKDDDDK-His Tag)[Go to Product page](#)**1** Image

Overview

Quantity:	20 µg
Target:	TRKA (NTRK1)
Origin:	Human
Source:	HEK-293 Cells
Protein Type:	Recombinant
Purification tag / Conjugate:	This TRKA protein is labelled with DYKDDDDK-His Tag.
Application:	Antibody Production (AbP), Standard (STD)

Product Details

Characteristics:	<ul style="list-style-type: none">• Recombinant human TrkA (C-term DDK/His tag, transcript variant 1) protein expressed in Human 293HEK cells.• Produced with end-sequenced ORF clone
Purity:	> 80 % as determined by SDS-PAGE and Coomassie blue staining

Target Details

Target:	TRKA (NTRK1)
Alternative Name:	Trka (NTRK1 Products)
Background:	This gene encodes a member of the neurotrophic tyrosine kinase receptor (NTRK) family. This kinase is a membrane-bound receptor that, upon neurotrophin binding, phosphorylates itself and members of the MAPK pathway. The presence of this kinase leads to cell differentiation and may play a role in specifying sensory neuron subtypes. Mutations in this gene have been

Target Details

associated with congenital insensitivity to pain, anhidrosis, self-mutilating behavior, mental retardation and cancer. Alternate transcriptional splice variants of this gene have been found, but only three have been characterized to date.

Molecular Weight: 45 kDa

NCBI Accession: [NP_001012331](#)

Pathways: [RTK Signaling](#), [Neurotrophin Signaling Pathway](#), [cAMP Metabolic Process](#)

Application Details

Application Notes: Recombinant human proteins can be used for:
Native antigens for optimized antibody production
Positive controls in ELISA and other antibody assays

Comment: The tag is located at the C-terminal.

Restrictions: For Research Use only

Handling

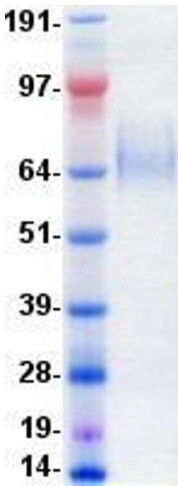
Concentration: 50 µg/mL

Buffer: 1 x PBS, pH 7.4, 10 % glycerol

Storage: -80 °C

Storage Comment: Store at -80°C. Thaw on ice, aliquot to individual single-use tubes, and then re-freeze immediately. Only 2-3 freeze thaw cycles are recommended.

Images



Western Blotting

Image 1. Validation with Western Blot