

Datasheet for ABIN2734333

TRKB Protein (DYKDDDDK-His Tag)[Go to Product page](#)**1** Image

Overview

Quantity:	20 µg
Target:	TRKB (NTRK2)
Origin:	Human
Source:	HEK-293 Cells
Protein Type:	Recombinant
Purification tag / Conjugate:	This TRKB protein is labelled with DYKDDDDK-His Tag.
Application:	Antibody Production (AbP), Standard (STD)

Product Details

Characteristics:	<ul style="list-style-type: none">• Recombinant human TrkB (C-term DDK/His tag, transcript variant c) protein expressed in Human 293HEK cells.• Produced with end-sequenced ORF clone
Purity:	> 80 % as determined by SDS-PAGE and Coomassie blue staining

Target Details

Target:	TRKB (NTRK2)
Alternative Name:	Trkb (NTRK2 Products)
Background:	This gene encodes a member of the neurotrophic tyrosine receptor kinase (NTRK) family. This kinase is a membrane-bound receptor that, upon neurotrophin binding, phosphorylates itself and members of the MAPK pathway. Signalling through this kinase leads to cell differentiation. Mutations in this gene have been associated with obesity and mood disorders. Alternative

Target Details

	splicing results in multiple transcript variants.
Molecular Weight:	47 kDa
NCBI Accession:	NP_001018074
Pathways:	RTK Signaling , Neurotrophin Signaling Pathway , cAMP Metabolic Process , Skeletal Muscle Fiber Development , Feeding Behaviour , Dicarboxylic Acid Transport

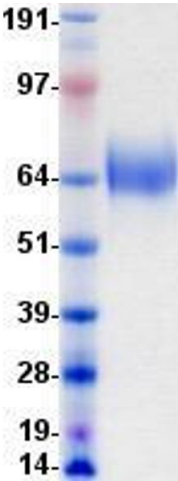
Application Details

Application Notes:	Recombinant human proteins can be used for: Native antigens for optimized antibody production Positive controls in ELISA and other antibody assays
Comment:	The tag is located at the C-terminal.
Restrictions:	For Research Use only

Handling

Concentration:	50 µg/mL
Buffer:	1 x PBS, pH 7.4, 10 % glycerol. Store at -80C. Avoid repeated freeze-thaw cycles. Stable for at least 3 months from receipt of products under proper storage and handling conditions.
Storage:	-80 °C
Storage Comment:	Store at -80°C. Thaw on ice, aliquot to individual single-use tubes, and then re-freeze immediately. Only 2-3 freeze thaw cycles are recommended.

Images



Western Blotting

Image 1. Validation with Western Blot