

Datasheet for ABIN2734344 **NTRK3 Protein (DYKDDDDK Tag)**



[Go to Product page](#)

1 Image

Overview

Quantity:	20 µg
Target:	NTRK3
Origin:	Human
Source:	Insect cells (Sf9)
Protein Type:	Recombinant
Purification tag / Conjugate:	This NTRK3 protein is labelled with DYKDDDDK Tag.
Application:	Antibody Production (AbP), Standard (STD)

Product Details

Characteristics:	<ul style="list-style-type: none">• Recombinant human TrkC (C-term DDK tag) protein expressed in Sf9 cells.• Produced with end-sequenced ORF clone
------------------	---

Purity:	> 80 % as determined by SDS-PAGE and Coomassie blue staining
---------	--

Target Details

Target:	NTRK3
Alternative Name:	Trkc (NTRK3 Products)
Background:	<p>This gene encodes a member of the neurotrophic tyrosine receptor kinase (NTRK) family. This kinase is a membrane-bound receptor that, upon neurotrophin binding, phosphorylates itself and members of the MAPK pathway. Signalling through this kinase leads to cell differentiation and may play a role in the development of proprioceptive neurons that sense body position.</p> <p>Mutations in this gene have been associated with medulloblastomas, secretory breast</p>

Target Details

carcinomas and other cancers. Several transcript variants encoding different isoforms have been found for this gene.

Molecular Weight: 44.7 kDa

NCBI Accession: [NP_001012338](#)

Pathways: [RTK Signaling](#), [Neurotrophin Signaling Pathway](#), [Regulation of Cell Size](#)

Application Details

Application Notes: Recombinant human proteins can be used for:
Native antigens for optimized antibody production
Positive controls in ELISA and other antibody assays

Comment: The tag is located at the C-terminal.

Restrictions: For Research Use only

Handling

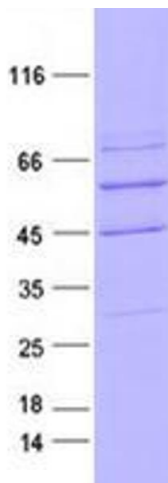
Concentration: 50 µg/mL

Buffer: 50 mM Tris-HCl, pH 8.0, 100 mM glycine, 10 % glycerol.

Storage: -80 °C

Storage Comment: Store at -80°C. Thaw on ice, aliquot to individual single-use tubes, and then re-freeze immediately. Only 2-3 freeze thaw cycles are recommended.

Images



Western Blotting

Image 1. Validation with Western Blot