

Datasheet for ABIN2734366

**Trnt1 Protein (Transcript Variant 1) (Myc-DYKDDDDK Tag)**[Go to Product page](#)**1** Image

## Overview

Quantity:	20 µg
Target:	Trnt1
Protein Characteristics:	Transcript Variant 1
Origin:	Human
Source:	HEK-293 Cells
Protein Type:	Recombinant
Purification tag / Conjugate:	This Trnt1 protein is labelled with Myc-DYKDDDDK Tag.
Application:	Antibody Production (AbP), Standard (STD)

## Product Details

Characteristics:	<ul style="list-style-type: none"><li>• Recombinant human tRNA nucleotidyl transferase, CCA-adding, 1 (TRNT1), transcript variant 1 (transcript variant 1) protein expressed in HEK293 cells.</li><li>• Produced with end-sequenced ORF clone</li></ul>
Purity:	> 80 % as determined by SDS-PAGE and Coomassie blue staining

## Target Details

Target:	Trnt1
Abstract:	<a href="#">Trnt1 Products</a>
Background:	The protein encoded by this gene is a CCA-adding enzyme which belongs to the tRNA nucleotidyltransferase/poly(A) polymerase family. This essential enzyme functions by catalyzing the addition of the conserved nucleotide triplet CCA to the 3' terminus of tRNA

## Target Details

molecules. Mutations in this gene result in sideroblastic anemia with B-cell immunodeficiency, periodic fevers, and developmental delay. Alternative splicing results in multiple transcript variants.

Molecular Weight:	46.8
NCBI Accession:	<a href="#">NP_057084</a>

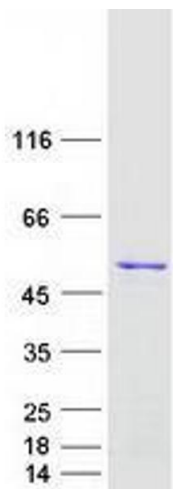
## Application Details

Application Notes:	Recombinant human proteins can be used for: Native antigens for optimized antibody production Positive controls in ELISA and other antibody assays
Comment:	The tag is located at the C-terminal.
Restrictions:	For Research Use only

## Handling

Concentration:	50 µg/mL
Buffer:	25 mM Tris.HCl, pH 7.3, 100 mM glycine, 10 % glycerol.
Storage:	-80 °C
Storage Comment:	Store at -80°C. Thaw on ice, aliquot to individual single-use tubes, and then re-freeze immediately. Only 2-3 freeze thaw cycles are recommended.

## Images



### Western Blotting

**Image 1.** Validation with Western Blot