

Datasheet for ABIN2734558

TUBB Protein (Myc-DYKDDDDK Tag)[Go to Product page](#)**1** Image**1** Publication

Overview

Quantity:	20 µg
Target:	TUBB
Origin:	Human
Source:	HEK-293 Cells
Protein Type:	Recombinant
Purification tag / Conjugate:	This TUBB protein is labelled with Myc-DYKDDDDK Tag.
Application:	Antibody Production (AbP), Standard (STD)

Product Details

Characteristics:	<ul style="list-style-type: none">• Recombinant human TUBB / TUBB5 protein expressed in HEK293 cells.• Produced with end-sequenced ORF clone
Purity:	> 80 % as determined by SDS-PAGE and Coomassie blue staining

Target Details

Target:	TUBB
Alternative Name:	Tubb,tubb5 (TUBB Products)
Background:	This gene encodes a beta tubulin protein. This protein forms a dimer with alpha tubulin and acts as a structural component of microtubules. Mutations in this gene cause cortical dysplasia, complex, with other brain malformations 6. Alternative splicing results in multiple splice variants. There are multiple pseudogenes for this gene on chromosomes 1, 6, 7, 8, 9, and 13.

Target Details

Molecular Weight:	49.5 kDa
NCBI Accession:	NP_821133
Pathways:	Microtubule Dynamics , M Phase

Application Details

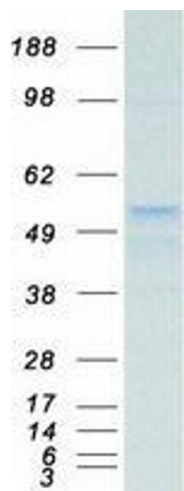
Application Notes:	Recombinant human proteins can be used for: Native antigens for optimized antibody production Positive controls in ELISA and other antibody assays
Comment:	The tag is located at the C-terminal.
Restrictions:	For Research Use only

Handling

Concentration:	50 µg/mL
Buffer:	25 mM Tris.HCl, pH 7.3, 100 mM glycine, 10 % glycerol.
Storage:	-80 °C
Storage Comment:	Store at -80°C. Thaw on ice, aliquot to individual single-use tubes, and then re-freeze immediately. Only 2-3 freeze thaw cycles are recommended.

Publications

Product cited in:	Nishimura, Oki, Ando, Imori, Nakaji, Nakashima, Saeki, Oda, Maehara: "High ubiquitin-specific protease 44 expression induces DNA aneuploidy and provides independent prognostic information in gastric cancer." in: Cancer medicine , Vol. 6, Issue 6, pp. 1453-1464, (2018) (PubMed).
-------------------	---



Western Blotting

Image 1. Validation with Western Blot