



[Go to Product page](#)

Datasheet for ABIN2734601

TULP3 Protein (Myc-DYKDDDDK Tag)

1 Image

Overview

| | |
|-------------------------------|---|
| Quantity: | 20 µg |
| Target: | TULP3 |
| Origin: | Human |
| Source: | HEK-293 Cells |
| Protein Type: | Recombinant |
| Purification tag / Conjugate: | This TULP3 protein is labelled with Myc-DYKDDDDK Tag. |
| Application: | Antibody Production (AbP), Standard (STD) |

Product Details

| | |
|------------------|--|
| Characteristics: | <ul style="list-style-type: none">• Recombinant human TULP3 protein expressed in HEK293 cells.• Produced with end-sequenced ORF clone |
| Purity: | > 80 % as determined by SDS-PAGE and Coomassie blue staining |

Target Details

| | |
|-------------------|---|
| Target: | TULP3 |
| Alternative Name: | Tulp3 (TULP3 Products) |
| Background: | <p>This gene encodes a member of the tubby gene family of bipartite transcription factors. Members of this family have been identified in plants, vertebrates, and invertebrates, and they share a conserved N-terminal transcription activation region and a conserved C-terminal DNA and phosphatidylinositol-phosphate binding region. The encoded protein binds to phosphoinositides in the plasma membrane via its C-terminal region and probably functions as</p> |

Target Details

a membrane-bound transcription regulator that translocates to the nucleus in response to phosphoinositide hydrolysis, for instance, induced by G-protein-coupled-receptor signaling. It plays an important role in neuronal development and function. Two transcript variants encoding distinct isoforms have been identified for this gene.

Molecular Weight: 49.5 kDa

NCBI Accession: [NP_003315](#)

Pathways: [Regulation of G-Protein Coupled Receptor Protein Signaling, Tube Formation](#)

Application Details

Application Notes: Recombinant human proteins can be used for:
Native antigens for optimized antibody production
Positive controls in ELISA and other antibody assays

Comment: The tag is located at the C-terminal.

Restrictions: For Research Use only

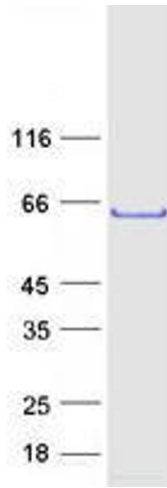
Handling

Concentration: 50 µg/mL

Buffer: 25 mM Tris.HCl, pH 7.3, 100 mM glycine, 10 % glycerol.

Storage: -80 °C

Storage Comment: Store at -80°C. Thaw on ice, aliquot to individual single-use tubes, and then re-freeze immediately. Only 2-3 freeze thaw cycles are recommended.



Western Blotting

Image 1. Validation with Western Blot