

Datasheet for ABIN2734728

JAK2 Protein (full length) (Myc-DYKDDDDK Tag)



[Go to Product page](#)

1 Image

Overview

Quantity:	20 µg
Target:	JAK2
Protein Characteristics:	full length
Origin:	Human
Source:	HEK-293 Cells
Protein Type:	Recombinant
Purification tag / Conjugate:	This JAK2 protein is labelled with Myc-DYKDDDDK Tag.
Application:	Antibody Production (AbP), Standard (STD)

Product Details

Sequence: MGMACLTMTE MEGTSTSSIIY QNGDISGNAN SMKQIDPVLQ VVLYHSLGKS EADYLTFPSG
 EYVAEEICIA ASKACGITPV YHNMFALMSE TERIWYPPNH VFHIDESTRH NVLYRIRFYF
 PRWYCSGSNR AYRHGISRGA EAPLLDDFVM SYLFAQWRHD FVHGWIQVPV THETQEECLG
 MAVLDMRIA KENDQTPLAI YNSISYKTFI PKCIRAKIQD YHILTRKRIR YRFRRFIQQF
 SQCKATARNL KLKYLINLET LQSAFYTEKF EVKEPGSGPS GEEIFATIII TGNGGIQWSR
 GKHKESLTL EQDLQLYCDF PNIIDVSIKQ ANQEGSNESR VVTIHKQDGK NLEIELSSLR
 EALSFVSLID GYYRLTADAH HYLCKEVAPP AVLENIQSNC HGPISMDFAI SKLKKAGNQT
 GLYVLRCSFK DFNKYFLTFA VERENVIEYK HCLITKNENE EYNLSGTTKN FSSLKDLLNC
 YQMETVRSND IIFQFTKCCP PKPKDKSNLL VFRTNGVSDV PTSPTLQRPT HMNQMVFHKI
 RNEDLIFNES LGQGTFTKIF KGVRRVGDY GQLHETEVLV KVLDAHRNY SESFFEAASM
 MSKLSHKHLV LNYGVCVCGD ENILVQEFVK FGSLDTYLKK NKNCINILWK LEVAKQLAWA
 MHFLEENTLI HGNVCAKNIL LIREEDRKTG NPPFIKLSDP GISITVLPKD ILQERIPWVP

Product Details

PECIENPKNL NLATDKWSFG TTLWEICSGG DKPLSALDSQ RKLQFYEDRH QLPAPKWAEL
ANLINNCMDY EPDFRPSFRA IIRDLNSLFT PDYELLTEND MLPNMRIGAL GFSGAFEDRD
PTQFEERHLK FLQQLGKGNF GSVEMCRYDP LQDNTGEVVA VKKLQHSTEE HLRDFEREIE
ILKSLQHDNI VKYKGVCSYA GRRNLKLIME YLPYGSLRDY LQKHKERIDH IKLLQYTSQI
CKGMEYLGTK RYIHRDLATR NILVENENRV KIGDFGLTKV LPQDKEYYKV KEPGESPIFW
YAPESLTESK FSVASDVWSF GVVLYELFTY IEKSKSPPAE FMRMIGNDKQ GQMIVFHLIE
LLKNNGRLPR PDGCPDEIYM IMTECWNNNV NQRPSFRDLA LRVDQIRDNM AG

Characteristics:

- Recombinant human Tyrosine-protein kinase JAK2 protein expressed in HEK293 cells.
- Produced with end-sequenced ORF clone

Purity: > 80 % as determined by SDS-PAGE and Coomassie blue staining

Target Details

Target: JAK2

Alternative Name: Tyrosine-Protein Kinase Jak2 ([JAK2 Products](#))

Background: This gene product is a protein tyrosine kinase involved in a specific subset of cytokine receptor signaling pathways. It has been found to be constitutively associated with the prolactin receptor and is required for responses to gamma interferon. Mice that do not express an active protein for this gene exhibit embryonic lethality associated with the absence of definitive erythropoiesis.

Molecular Weight: 130.5 kDa

NCBI Accession: [NP_004963](#)

Pathways: [JAK-STAT Signaling](#), [RTK Signaling](#), [Interferon-gamma Pathway](#), [Positive Regulation of Peptide Hormone Secretion](#), [Intracellular Steroid Hormone Receptor Signaling Pathway](#), [Response to Growth Hormone Stimulus](#), [Positive Regulation of Endopeptidase Activity](#), [Protein targeting to Nucleus](#), [CXCR4-mediated Signaling Events](#), [Platelet-derived growth Factor Receptor Signaling](#), [Unfolded Protein Response](#)

Application Details

Application Notes: Recombinant human proteins can be used for:
Native antigens for optimized antibody production
Positive controls in ELISA and other antibody assays

Comment: The tag is located at the C-terminal.

Application Details

Restrictions: For Research Use only

Handling

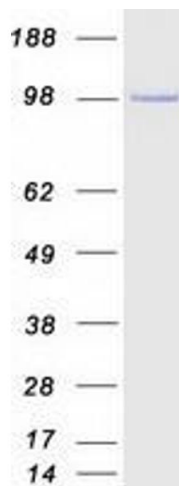
Concentration: 50 µg/mL

Buffer: 25 mM Tris.HCl, pH 7.3, 100 mM glycine, 10 % glycerol.

Storage: -80 °C

Storage Comment: Store at -80°C. Thaw on ice, aliquot to individual single-use tubes, and then re-freeze immediately. Only 2-3 freeze thaw cycles are recommended.

Images



Western Blotting

Image 1. Validation with Western Blot