

Datasheet for ABIN2734856

**UBE2L3 Protein (Transcript Variant 1) (Myc-DYKDDDDK Tag)**[1 Image](#)[1 Publication](#)[Go to Product page](#)

## Overview

Quantity:	20 µg
Target:	UBE2L3
Protein Characteristics:	Transcript Variant 1
Origin:	Human
Source:	HEK-293 Cells
Protein Type:	Recombinant
Purification tag / Conjugate:	This UBE2L3 protein is labelled with Myc-DYKDDDDK Tag.
Application:	Antibody Production (AbP), Standard (STD)

## Product Details

Characteristics:	<ul style="list-style-type: none"><li>• Recombinant human UBE2L3 / UBCH7 (transcript variant 1) protein expressed in HEK293 cells.</li><li>• Produced with end-sequenced ORF clone</li></ul>
Purity:	> 80 % as determined by SDS-PAGE and Coomassie blue staining

## Target Details

Target:	UBE2L3
Alternative Name:	Ube2l3,ubch7 ( <a href="#">UBE2L3 Products</a> )
Background:	The modification of proteins with ubiquitin is an important cellular mechanism for targeting abnormal or short-lived proteins for degradation. Ubiquitination involves at least three classes of enzymes: ubiquitin-activating enzymes (E1s), ubiquitin-conjugating enzymes (E2s) and

## Target Details

ubiquitin-protein ligases (E3s). This gene encodes a member of the E2 ubiquitin-conjugating enzyme family. This enzyme is demonstrated to participate in the ubiquitination of p53, c-Fos, and the NF-κB precursor p105 in vitro. Several alternatively spliced transcript variants have been found for this gene.

Molecular Weight: 17.7 kDa

NCBI Accession: [NP\\_003338](#)

## Application Details

Application Notes: Recombinant human proteins can be used for:  
Native antigens for optimized antibody production  
Positive controls in ELISA and other antibody assays

Comment: The tag is located at the C-terminal.

Restrictions: For Research Use only

## Handling

Concentration: 50 µg/mL

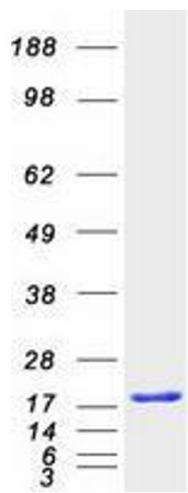
Buffer: 25 mM Tris.HCl, pH 7.3, 100 mM glycine, 10 % glycerol.

Storage: -80 °C

Storage Comment: Store at -80°C. Thaw on ice, aliquot to individual single-use tubes, and then re-freeze immediately. Only 2-3 freeze thaw cycles are recommended.

## Publications

Product cited in: Mahankali, Peng, Henkels, Dinuer, Gomez-Cambronero: "Phospholipase D2 (PLD2) is a guanine nucleotide exchange factor (GEF) for the GTPase Rac2." in: **Proceedings of the National Academy of Sciences of the United States of America**, Vol. 108, Issue 49, pp. 19617-22, (2011) ([PubMed](#)).



Western Blotting

**Image 1.** Validation with Western Blot