

Datasheet for ABIN2734887

Ubiquilin 3 Protein (UBQLN3) (His tag)**1** Image[Go to Product page](#)

Overview

Quantity:	50 µg
Target:	Ubiquilin 3 (UBQLN3)
Origin:	Human
Source:	Escherichia coli (E. coli)
Protein Type:	Recombinant
Purification tag / Conjugate:	This Ubiquilin 3 protein is labelled with His tag.
Application:	Antibody Production (AbP), Standard (STD)

Product Details

Characteristics:	<ul style="list-style-type: none">• Recombinant human Ubiquilin-3 (UBQLN3) (full length, N-term HIS tag) protein expressed in E.coli.• Produced with end-sequenced ORF clone
Purity:	> 80 % as determined by SDS-PAGE and Coomassie blue staining

Target Details

Target:	Ubiquilin 3 (UBQLN3)
Alternative Name:	Ubiquilin-3 (Ubqln3) (UBQLN3 Products)
Background:	This gene encodes a ubiquitin-like protein (ubiquilin) that shares a high degree of similarity with related products in yeast, rat and frog. Ubiquilins contain an N-terminal ubiquitin-like domain and a C-terminal ubiquitin-associated domain. They physically associate with both proteasomes and ubiquitin ligases, and are thus thought to functionally link the ubiquitination

Target Details

machinery to the proteasome to affect in vivo protein degradation. This gene is specifically expressed in the testis. It has been suggested that this gene may regulate cell-cycle progression during spermatogenesis, however, it has been shown that the orthologous mouse gene is dispensable for embryonic development and spermatogenesis.

Molecular Weight:	70.7 kDa
NCBI Accession:	NP_059509

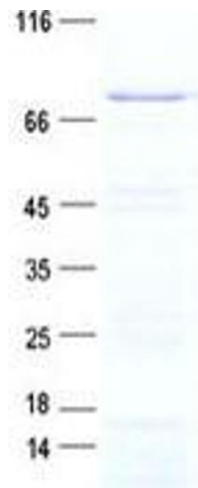
Application Details

Application Notes:	Recombinant human proteins can be used for: Native antigens for optimized antibody production Positive controls in ELISA and other antibody assays
Comment:	The tag is located at the N-terminal.
Restrictions:	For Research Use only

Handling

Concentration:	50 µg/mL
Buffer:	25 mM Tris, pH 8.0, 150 mM NaCl, 10 % glycerol, 1 % Sarkosyl.
Storage:	-80 °C
Storage Comment:	Store at -80°C. Thaw on ice, aliquot to individual single-use tubes, and then re-freeze immediately. Only 2-3 freeze thaw cycles are recommended.

Images



Western Blotting

Image 1. Validation with Western Blot