

Datasheet for ABIN2735158

ABL2 Protein (ABL2) (Transcript Variant C) (Myc-DYKDDDDK Tag)



[Go to Product page](#)

1 Image

Overview

Quantity:	20 µg
Target:	ABL2
Protein Characteristics:	Transcript Variant C
Origin:	Human
Source:	HEK-293 Cells
Protein Type:	Recombinant
Purification tag / Conjugate:	This ABL2 protein is labelled with Myc-DYKDDDDK Tag.
Application:	Antibody Production (AbP), Standard (STD)

Product Details

Characteristics:	<ul style="list-style-type: none"> Recombinant human V-abl Abelson murine leukemia viral oncogene homolog 2 (arg, Abelson-related gene) (ABL2), transcript variant c (transcript variant c) protein expressed in HEK293 cells. Produced with end-sequenced ORF clone
Purity:	> 80 % as determined by SDS-PAGE and Coomassie blue staining

Target Details

Target:	ABL2
Alternative Name:	V-Abl Abelson Murine Leukemia Viral Oncogene Homolog 2 (Arg, Abelson-Related Gene) (Abl2) (ABL2 Products)
Background:	This gene encodes a member of the Abelson family of nonreceptor tyrosine protein kinases.

Target Details

The protein is highly similar to the c-abl oncogene 1 protein, including the tyrosine kinase, SH2 and SH3 domains, and it plays a role in cytoskeletal rearrangements through its C-terminal F-actin- and microtubule-binding sequences. This gene is expressed in both normal and tumor cells, and is involved in translocation with the ets variant 6 gene in leukemia. Multiple alternatively spliced transcript variants encoding different protein isoforms have been found for this gene.

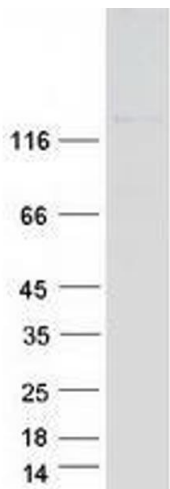
Molecular Weight:	126.5 kDa
NCBI Accession:	NP_001093578

Application Details

Application Notes:	Recombinant human proteins can be used for: Native antigens for optimized antibody production Positive controls in ELISA and other antibody assays
Comment:	The tag is located at the C-terminal.
Restrictions:	For Research Use only

Handling

Concentration:	50 µg/mL
Buffer:	25 mM Tris.HCl, pH 7.3, 100 mM glycine, 10 % glycerol.
Storage:	-80 °C
Storage Comment:	Store at -80°C. Thaw on ice, aliquot to individual single-use tubes, and then re-freeze immediately. Only 2-3 freeze thaw cycles are recommended.



Western Blotting

Image 1. Validation with Western Blot