

Datasheet for ABIN2735406  
**VWF Protein (DYKDDDDK Tag)**



[Go to Product page](#)

1 Image

## Overview

Quantity:	20 µg
Target:	VWF
Origin:	Human
Source:	Insect cells (Sf9)
Protein Type:	Recombinant
Purification tag / Conjugate:	This VWF protein is labelled with DYKDDDDK Tag.
Application:	Antibody Production (AbP), Standard (STD)

## Product Details

Characteristics:	<ul style="list-style-type: none"><li>• Recombinant human von Willebrand factor (VWF) (C-term DDK tag) protein expressed in sf9 cells.</li><li>• Produced with end-sequenced ORF clone</li></ul>
Purity:	> 80 % as determined by SDS-PAGE and Coomassie blue staining

## Target Details

Target:	VWF
Abstract:	<a href="#">VWF Products</a>
Background:	This gene encodes a glycoprotein involved in hemostasis. The encoded preproprotein is proteolytically processed following assembly into large multimeric complexes. These complexes function in the adhesion of platelets to sites of vascular injury and the transport of various proteins in the blood. Mutations in this gene result in von Willebrand disease, an

Target Details

	inherited bleeding disorder. An unprocessed pseudogene has been found on chromosome 22.
Molecular Weight:	67 kDa
NCBI Accession:	<a href="#">NP_000543</a>

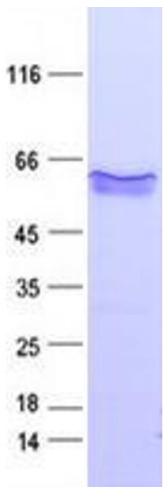
Application Details

Application Notes:	Recombinant human proteins can be used for: Native antigens for optimized antibody production Positive controls in ELISA and other antibody assays
Comment:	The tag is located at the C-terminal.
Restrictions:	For Research Use only

Handling

Concentration:	50 µg/mL
Buffer:	50 mM Tris-HCl, pH 8.0, 100 mM glycine, 10 % glycerol. Store at -80C. Avoid repeated freeze-thaw cycles. Stable for at least 3 months from receipt of products under proper storage and handling conditions.
Storage:	-80 °C
Storage Comment:	Store at -80°C. Thaw on ice, aliquot to individual single-use tubes, and then re-freeze immediately. Only 2-3 freeze thaw cycles are recommended.

Images



Western Blotting

Image 1. Validation with Western Blot