

Datasheet for ABIN2735482

WHAMM Protein (Myc-DYKDDDDK Tag)



[Go to Product page](#)

1 Image

Overview

Quantity:	20 µg
Target:	WHAMM
Origin:	Human
Source:	HEK-293 Cells
Protein Type:	Recombinant
Purification tag / Conjugate:	This WHAMM protein is labelled with Myc-DYKDDDDK Tag.
Application:	Antibody Production (AbP), Standard (STD)

Product Details

Characteristics:	<ul style="list-style-type: none">• Recombinant human WHAMM protein expressed in HEK293 cells.• Produced with end-sequenced ORF clone
Purity:	> 80 % as determined by SDS-PAGE and Coomassie blue staining

Target Details

Target:	WHAMM
Abstract:	WHAMM Products
Background:	This gene encodes a protein that plays a role in actin nucleation, Golgi membrane association and microtubule binding. The encoded protein is a nucleation-promoting factor that regulates the Actin-related protein 2/3 complex. The activated complex initiates growth of new actin filaments by binding to existing actin filaments. The encoded protein also functions in regulation of transport from the endoplasmic reticulum to the Golgi complex and in

Target Details

maintenance of the Golgi complex near the centrosome. Four pseudogenes of this gene are present on the same arm of chromosome 15 as this gene.

Molecular Weight: 90.7 kDa

NCBI Accession: [NP_001073904](#)

Application Details

Application Notes: Recombinant human proteins can be used for:
Native antigens for optimized antibody production
Positive controls in ELISA and other antibody assays

Comment: The tag is located at the C-terminal.

Restrictions: For Research Use only

Handling

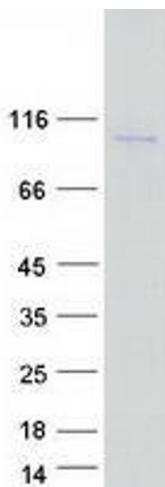
Concentration: 50 µg/mL

Buffer: 25 mM Tris.HCl, pH 7.3, 100 mM glycine, 10 % glycerol.

Storage: -80 °C

Storage Comment: Store at -80°C. Thaw on ice, aliquot to individual single-use tubes, and then re-freeze immediately. Only 2-3 freeze thaw cycles are recommended.

Images



Western Blotting

Image 1. Validation with Western Blot