

Datasheet for ABIN2735548

**WEE1 Protein (Transcript Variant 1) (Myc-DYKDDDDK Tag)**[Go to Product page](#)**1** Image

## Overview

|                               |  |
|-------------------------------|--|
| Quantity:                     | 20 µg  |
| Target:                       | WEE1   |
| Protein Characteristics:      | Transcript Variant 1                                 |
| Origin:                       | Human  |
| Source:                       | HEK-293 Cells  |
| Protein Type:                 | Recombinant  |
| Purification tag / Conjugate: | This WEE1 protein is labelled with Myc-DYKDDDDK Tag. |
| Application:                  | Antibody Production (AbP), Standard (STD)            |

## Product Details

|                  |   |
|------------------|---|
| Characteristics: | <ul style="list-style-type: none"><li>• Recombinant human WEE1 / Wee1-like protein kinase (transcript variant 1) protein expressed in HEK293 cells.</li><li>• Produced with end-sequenced ORF clone</li></ul> |
| Purity:          | > 80 % as determined by SDS-PAGE and Coomassie blue staining  |

## Target Details

|                   |   |
|-------------------|---|
| Target:           | WEE1  |
| Alternative Name: | Wee1,wee1-Like Protein Kinase ( <a href="#">WEE1 Products</a> )   |
| Background:       | This gene encodes a nuclear protein, which is a tyrosine kinase belonging to the Ser/Thr family of protein kinases. This protein catalyzes the inhibitory tyrosine phosphorylation of CDC2/cyclin B kinase, and appears to coordinate the transition between DNA replication and mitosis by |

## Target Details

|                   |  |
|-------------------|--|
|                   | protecting the nucleus from cytoplasmically activated CDC2 kinase.                                     |
| Molecular Weight: | 71.4 kDa   |
| NCBI Accession:   | <a href="#">NP_003381</a>  |
| Pathways:         | <a href="#">Cell Division Cycle</a> , <a href="#">Mitotic G1-G1/S Phases</a> , <a href="#">M Phase</a> |

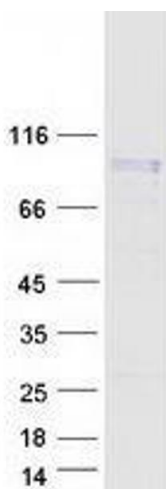
## Application Details

|                    |  |
|--------------------|--|
| Application Notes: | Recombinant human proteins can be used for:<br>Native antigens for optimized antibody production<br>Positive controls in ELISA and other antibody assays |
| Comment:           | The tag is located at the C-terminal.  |
| Restrictions:      | For Research Use only  |

## Handling

|                  |   |
|------------------|---|
| Concentration:   | 50 µg/mL  |
| Buffer:          | 25 mM Tris.HCl, pH 7.3, 100 mM glycine, 10 % glycerol.  |
| Storage:         | -80 °C  |
| Storage Comment: | Store at -80°C. Thaw on ice, aliquot to individual single-use tubes, and then re-freeze immediately. Only 2-3 freeze thaw cycles are recommended. |

## Images



### Western Blotting

**Image 1.** Validation with Western Blot