



[Go to Product page](#)

Datasheet for ABIN2735598

## WISP1 Protein (Transcript Variant 1) (Myc-DYKDDDDK Tag)

### 1 Image

#### Overview

Quantity:	20 µg
Target:	WISP1
Protein Characteristics:	Transcript Variant 1
Origin:	Human
Source:	HEK-293 Cells
Protein Type:	Recombinant
Purification tag / Conjugate:	This WISP1 protein is labelled with Myc-DYKDDDDK Tag.
Application:	Antibody Production (AbP), Standard (STD)

#### Product Details

Characteristics:	<ul style="list-style-type: none"><li>• Recombinant human WISP1 (transcript variant 1) protein expressed in HEK293 cells.</li><li>• Produced with end-sequenced ORF clone</li></ul>
Purity:	> 80 % as determined by SDS-PAGE and Coomassie blue staining

#### Target Details

Target:	WISP1
Alternative Name:	Wisp1 ( <a href="#">WISP1 Products</a> )
Background:	This gene encodes a member of the WNT1 inducible signaling pathway (WISP) protein subfamily, which belongs to the connective tissue growth factor (CTGF) family. WNT1 is a member of a family of cysteine-rich, glycosylated signaling proteins that mediate diverse developmental processes. The CTGF family members are characterized by four conserved

## Target Details

---

cysteine-rich domains: insulin-like growth factor-binding domain, von Willebrand factor type C module, thrombospondin domain and C-terminal cystine knot-like domain. This gene may be downstream in the WNT1 signaling pathway that is relevant to malignant transformation. It is expressed at a high level in fibroblast cells, and overexpressed in colon tumors. The encoded protein binds to decorin and biglycan, two members of a family of small leucine-rich proteoglycans present in the extracellular matrix of connective tissue, and possibly prevents the inhibitory activity of decorin and biglycan in tumor cell proliferation. It also attenuates p53-mediated apoptosis in response to DNA damage through activation of the Akt kinase. It is 83 % identical to the mouse protein at the amino acid level. Multiple alternatively spliced transcript variants have been identified.

---

Molecular Weight: 38 kDa

---

NCBI Accession: [NP\\_003873](#)

---

Pathways: [WNT Signaling](#), [Growth Factor Binding](#)

## Application Details

---

Application Notes: Recombinant human proteins can be used for:  
Native antigens for optimized antibody production  
Positive controls in ELISA and other antibody assays

---

Comment: The tag is located at the C-terminal.

---

Restrictions: For Research Use only

## Handling

---

Concentration: 50 µg/mL

---

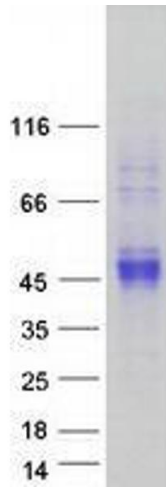
Buffer: 25 mM Tris.HCl, pH 7.3, 100 mM glycine, 10 % glycerol.

---

Storage: -80 °C

---

Storage Comment: Store at -80°C. Thaw on ice, aliquot to individual single-use tubes, and then re-freeze immediately. Only 2-3 freeze thaw cycles are recommended.



### Western Blotting

**Image 1.** Validation with Western Blot