

Datasheet for ABIN2735648

**WWP2 Protein (Transcript Variant 2) (Myc-DYKDDDDK Tag)**[Go to Product page](#)**1** Image

## Overview

Quantity:	20 µg
Target:	WWP2
Protein Characteristics:	Transcript Variant 2
Origin:	Human
Source:	HEK-293 Cells
Protein Type:	Recombinant
Purification tag / Conjugate:	This WWP2 protein is labelled with Myc-DYKDDDDK Tag.
Application:	Antibody Production (AbP), Standard (STD)

## Product Details

Characteristics:	<ul style="list-style-type: none"><li>• Recombinant human WWP2 (transcript variant 2) protein expressed in HEK293 cells.</li><li>• Produced with end-sequenced ORF clone</li></ul>
Purity:	> 80 % as determined by SDS-PAGE and Coomassie blue staining

## Target Details

Target:	WWP2
Alternative Name:	Wwp2 ( <a href="#">WWP2 Products</a> )
Background:	This gene encodes a member of the Nedd4 family of E3 ligases, which play an important role in protein ubiquitination. The encoded protein contains four WW domains and may play a role in multiple processes including chondrogenesis and the regulation of oncogenic signaling pathways via interactions with Smad proteins and the tumor suppressor PTEN. Alternatively

## Target Details

spliced transcript variants encoding multiple isoforms have been observed for this gene, and a pseudogene of this gene is located on the long arm of chromosome 10.

Molecular Weight: 50.9 kDa

NCBI Accession: [NP\\_955456](#)

Pathways: [Negative Regulation of Transporter Activity](#)

## Application Details

Application Notes: Recombinant human proteins can be used for:  
Native antigens for optimized antibody production  
Positive controls in ELISA and other antibody assays

Comment: The tag is located at the C-terminal.

Restrictions: For Research Use only

## Handling

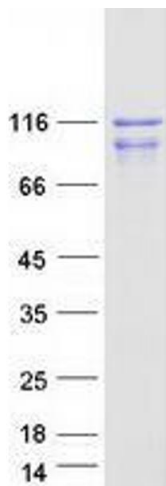
Concentration: 50 µg/mL

Buffer: 25 mM Tris.HCl, pH 7.3, 100 mM glycine, 10 % glycerol.

Storage: -80 °C

Storage Comment: Store at -80°C. Thaw on ice, aliquot to individual single-use tubes, and then re-freeze immediately. Only 2-3 freeze thaw cycles are recommended.

## Images



### Western Blotting

**Image 1.** Validation with Western Blot