

Datasheet for ABIN2735656

**X Antigen Family, Member 3 (XAGE3) (Transcript Variant 1)
protein (Myc-DYKDDDDK Tag)**[Go to Product page](#)**1** Image

Overview

Quantity:	20 µg
Target:	X Antigen Family, Member 3 (XAGE3)
Protein Characteristics:	Transcript Variant 1
Origin:	Human
Source:	HEK-293 Cells
Protein Type:	Recombinant
Purification tag / Conjugate:	Myc-DYKDDDDK Tag
Application:	Antibody Production (AbP), Standard (STD)

Product Details

Characteristics:	<ul style="list-style-type: none">• Recombinant human X antigen family, member 3 (XAGE3), transcript variant 1 (transcript variant 1) protein expressed in HEK293 cells.• Produced with end-sequenced ORF clone
Purity:	> 80 % as determined by SDS-PAGE and Coomassie blue staining

Target Details

Target:	X Antigen Family, Member 3 (XAGE3)
Abstract:	XAGE3 Products
Background:	This gene is a member of the XAGE subfamily, which belongs to the GAGE family. The GAGE genes are expressed in a variety of tumors and in some fetal and reproductive tissues. This gene is expressed in placenta and fetal liver/spleen, and may function in inhibiting cancer cell

Target Details

growth. The protein encoded by this gene shares a sequence similarity with other GAGE/PAGE proteins. Because of the expression pattern and the sequence similarity, this protein also belongs to a family of CT (cancer-testis) antigens. Alternative splicing of this gene generates 2 transcript variants differing in the 5' UTR.

Molecular Weight: 12.1 kDa

NCBI Accession: [NP_573440](#)

Application Details

Application Notes: Recombinant human proteins can be used for:
Native antigens for optimized antibody production
Positive controls in ELISA and other antibody assays

Comment: The tag is located at the C-terminal.

Restrictions: For Research Use only

Handling

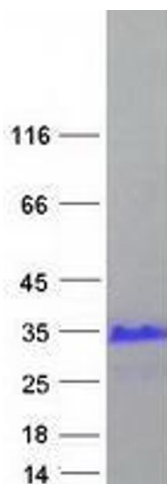
Concentration: 50 µg/mL

Buffer: 25 mM Tris.HCl, pH 7.3, 100 mM glycine, 10 % glycerol.

Storage: -80 °C

Storage Comment: Store at -80°C. Thaw on ice, aliquot to individual single-use tubes, and then re-freeze immediately. Only 2-3 freeze thaw cycles are recommended.

Images



Western Blotting

Image 1. Validation with Western Blot