

Datasheet for ABIN2735673

XPNPEP3 Protein (Myc-DYKDDDDK Tag)



[Go to Product page](#)

1 Image

Overview

Quantity:	20 µg
Target:	XPNPEP3
Origin:	Human
Source:	HEK-293 Cells
Protein Type:	Recombinant
Purification tag / Conjugate:	This XPNPEP3 protein is labelled with Myc-DYKDDDDK Tag.
Application:	Antibody Production (AbP), Standard (STD)

Product Details

Characteristics:	<ul style="list-style-type: none"> • Recombinant human XPNPEP3 protein expressed in HEK293 cells. • Produced with end-sequenced ORF clone
Purity:	> 80 % as determined by SDS-PAGE and Coomassie blue staining

Target Details

Target:	XPNPEP3
Alternative Name:	Xpnpep3 (XPNPEP3 Products)
Background:	The protein encoded by this gene belongs to the family of X-pro-aminopeptidases that utilize a metal cofactor, and remove the N-terminal amino acid from peptides with a proline residue in the penultimate position. This protein has been shown to localize to the mitochondria of renal cells, and have a role in ciliary function. Mutations in this gene are associated with nephronophthisis-like nephropathy-1. Alternatively spliced transcript variants encoding different

Target Details

	isoforms have been noted for this gene, however, expression of some of these isoforms in vivo is not known.[provided by RefSeq, Mar 2011]
Molecular Weight:	56.9 kDa
NCBI Accession:	NP_071381

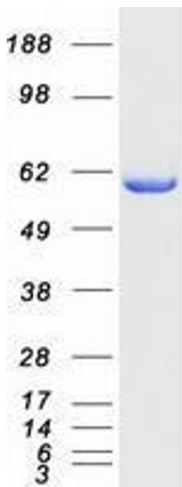
Application Details

Application Notes:	Recombinant human proteins can be used for: Native antigens for optimized antibody production Positive controls in ELISA and other antibody assays
Comment:	The tag is located at the C-terminal.
Restrictions:	For Research Use only

Handling

Concentration:	50 µg/mL
Buffer:	25 mM Tris.HCl, pH 7.3, 100 mM glycine, 10 % glycerol.
Storage:	-80 °C
Storage Comment:	Store at -80°C. Thaw on ice, aliquot to individual single-use tubes, and then re-freeze immediately. Only 2-3 freeze thaw cycles are recommended.

Images



Western Blotting

Image 1. Validation with Western Blot