



[Go to Product page](#)

Datasheet for ABIN2735764

## ZBED1 Protein (Transcript Variant 3) (His tag)

### 1 Image

#### Overview

Quantity:	10 µg
Target:	ZBED1
Protein Characteristics:	Transcript Variant 3
Origin:	Human
Source:	Escherichia coli (E. coli)
Protein Type:	Recombinant
Purification tag / Conjugate:	This ZBED1 protein is labelled with His tag.
Application:	Antibody Production (AbP), Standard (STD)

#### Product Details

Characteristics:	<ul style="list-style-type: none"><li>• Recombinant human ZBED1 (transcript variant 3) protein expressed in E. coli.</li><li>• Produced with end-sequenced ORF clone</li></ul>
Purity:	> 95 % as determined by SDS-PAGE and Coomassie blue staining
Endotoxin Level:	< 0.1 EU per µg protein as determined by LAL test

#### Target Details

Target:	ZBED1
Alternative Name:	Zbed1 ( <a href="#">ZBED1 Products</a> )
Background:	This gene is located in the pseudoautosomal region 1 (PAR1) of X and Y chromosomes. It was earlier identified as a gene with similarity to Ac transposable elements, however, was found not

## Target Details

---

to have transposase activity. Later studies show that this gene product is localized in the nucleus and functions as a transcription factor. It binds to DNA elements found in the promoter regions of several genes related to cell proliferation, such as histone H1, hence may have a role in regulating genes related to cell proliferation. Alternatively spliced transcript variants with different 5' untranslated region have been found for this gene.

---

Molecular Weight: 12.5 kDa

---

NCBI Accession: [NP\\_001164606](#)

## Application Details

---

Application Notes: Recombinant human proteins can be used for:  
Native antigens for optimized antibody production  
Positive controls in ELISA and other antibody assays

---

Comment: The tag is located at the N-terminal.

---

Restrictions: For Research Use only

## Handling

---

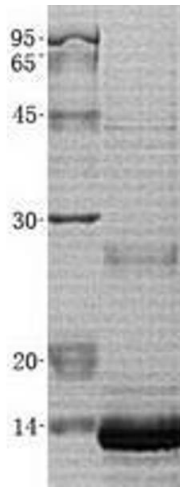
Buffer: Lyophilized from a 0.2 µM filtered solution of 20 mM Phosphate buffer, 150 mM NaCl, pH 7.2.  
Stable for at least 6 months from date of receipt under proper storage and handling conditions.

---

Storage: -80 °C

---

Storage Comment: Store at -80°C. Thaw on ice, aliquot to individual single-use tubes, and then re-freeze immediately. Only 2-3 freeze thaw cycles are recommended.



### Western Blotting

**Image 1.** Validation with Western Blot