

## Datasheet for ABIN2735883 ZIC2 Protein (ZIC2) (Myc-DYKDDDDK Tag)

[Go to Product page](#)

### 1 Image

#### Overview

Quantity:	20 µg
Target:	ZIC2
Origin:	Human
Source:	HEK-293 Cells
Protein Type:	Recombinant
Purification tag / Conjugate:	This ZIC2 protein is labelled with Myc-DYKDDDDK Tag.
Application:	Antibody Production (AbP), Standard (STD)

#### Product Details

Characteristics:	<ul style="list-style-type: none"><li>• Recombinant human ZIC2 protein expressed in HEK293 cells.</li><li>• Produced with end-sequenced ORF clone</li></ul>
Purity:	> 80 % as determined by SDS-PAGE and Coomassie blue staining

#### Target Details

Target:	ZIC2
Alternative Name:	Zic2 ( <a href="#">ZIC2 Products</a> )
Background:	Acts as a transcriptional activator or repressor. Plays important roles in the early stage of organogenesis of the CNS. Activates the transcription of the serotonin transporter SERT in uncrossed ipsilateral retinal ganglion cells (iRGCs) to refine eye-specific projections in primary visual targets. Its transcriptional activity is repressed by MDFIC. Involved in the formation of the ipsilateral retinal projection at the optic chiasm midline. Drives the expression of EPHB1 on

## Target Details

ipsilaterally projecting growth cones. Binds to the minimal GLI-consensus sequence 5'-TGGGTGGTC-3'. Associates to the basal SERT promoter region from ventrotemporal retinal segments of retinal embryos. [UniProtKB/Swiss-Prot Function]

Molecular Weight: 54.8 kDa

NCBI Accession: [NP\\_009060](#)

Pathways: [Tube Formation](#)

## Application Details

Application Notes: Recombinant human proteins can be used for:  
Native antigens for optimized antibody production  
Positive controls in ELISA and other antibody assays

Comment: The tag is located at the C-terminal.

Restrictions: For Research Use only

## Handling

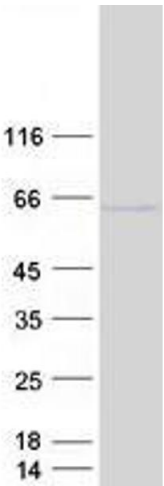
Concentration: 50 µg/mL

Buffer: 25 mM Tris.HCl, pH 7.3, 100 mM glycine, 10 % glycerol.

Storage: -80 °C

Storage Comment: Store at -80°C. Thaw on ice, aliquot to individual single-use tubes, and then re-freeze immediately. Only 2-3 freeze thaw cycles are recommended.

## Images



### Western Blotting

**Image 1.** Validation with Western Blot