

Datasheet for ABIN2735903

**anti-Slc30a3 antibody**

3 Images

[Go to Product page](#)

## Overview

Quantity:	0.1 mL
Target:	Slc30a3
Reactivity:	Human
Host:	Mouse
Clonality:	Monoclonal
Application:	Western Blotting (WB), Immunofluorescence (IF), Flow Cytometry (FACS)

## Product Details

Immunogen:	Full length human recombinant protein of human SLC30A3 (NP_003450) produced in HEK293T cell.
Clone:	2H6
Isotype:	IgG3
Purification:	Purified from mouse ascites fluids by affinity chromatography

## Target Details

Target:	Slc30a3
Alternative Name:	SLC30A3 ( <a href="#">Slc30a3 Products</a> )
Molecular Weight:	41.8 kDa
Gene ID:	7781
NCBI Accession:	<a href="#">NM_003459</a>

## Target Details

HGNC:	7781
Pathways:	<a href="#">Transition Metal Ion Homeostasis</a>

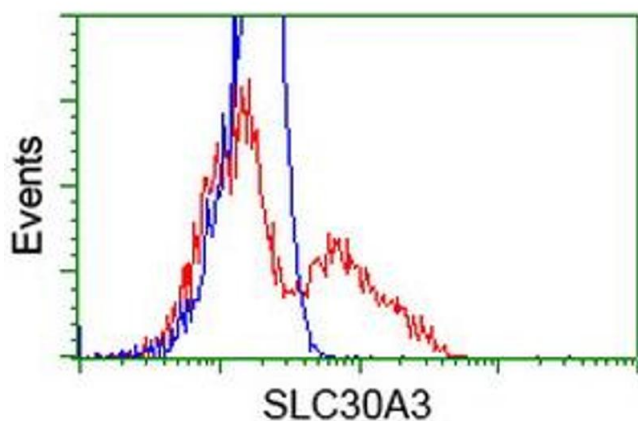
## Application Details

Application Notes:	WB 1:500, IF 1:100, FLOW 1:100
Comment:	The concentration of the product may vary between diferrent lots.
Restrictions:	For Research Use only

## Handling

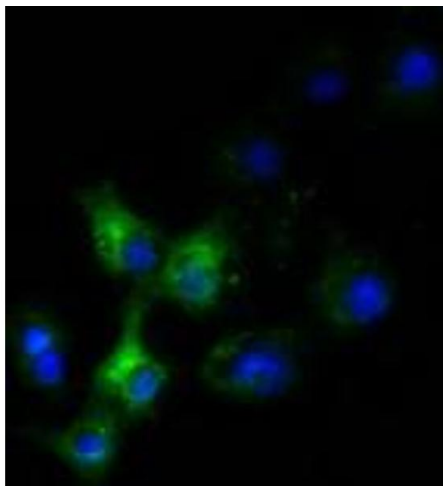
Format:	Liquid
Concentration:	0.5-1.0 mg/mL
Buffer:	PBS (PH 7.3) containing 1 % BSA, 50 % glycerol and 0.02 % sodium azide.
Preservative:	Sodium azide
Precaution of Use:	This product contains sodium azide: a POISONOUS AND HAZARDOUS SUBSTANCE which should be handled by trained staff only.

## Images



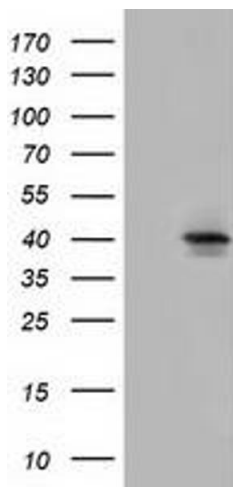
### Flow Cytometry

**Image 1.** HEK293T cells transfected with either RC205310 overexpress plasmid (Red) or empty vector control plasmid (Blue) were immunostained by anti-SLC30A3 antibody (ABIN2453647), and then analyzed by flow cytometry.



#### Immunofluorescence

**Image 2.** Anti-SLC30A3 mouse monoclonal antibody (ABIN2453647) immunofluorescent staining of COS7 cells transiently transfected by pCMV6-ENTRY SLC30A3 (RC205310).



#### Western Blotting

**Image 3.** HEK293T cells were transfected with the pCMV6-ENTRY control (Left lane) or pCMV6-ENTRY SLC30A3 (Right lane) cDNA for 48 hrs and lysed. Equivalent amounts of cell lysates (5 µg per lane) were separated by SDS-PAGE and immunoblotted with anti-SLC30A3.