



[Go to Product page](#)

Datasheet for ABIN2736602

anti-CXCR5 antibody

2 Images

Overview

Quantity:	100 µL
Target:	CXCR5
Reactivity:	Human, Mouse, Rat
Host:	Rabbit
Clonality:	Polyclonal
Conjugate:	This CXCR5 antibody is un-conjugated
Application:	Western Blotting (WB), Flow Cytometry (FACS), Immunocytochemistry (ICC)

Product Details

Immunogen:	A synthetic peptide of human CXCR5
Isotype:	IgG
Characteristics:	Rabbit Polyclonal to cxcr5.
Purification:	Affinity purification

Target Details

Target:	CXCR5
Alternative Name:	Cxcr5 (CXCR5 Products)
Gene ID:	6432
UniProt:	P32302

Application Details

Application Notes: WB 1:500-1:2000, ICC 1:50-1:200, FC 1:50-1:100

Restrictions: For Research Use only

Handling

Format: Liquid

Concentration: 1 mg/mL

Buffer: PBS with 0.02 % sodium azide, 50 % glycerol, pH 7.4

Preservative: Sodium azide

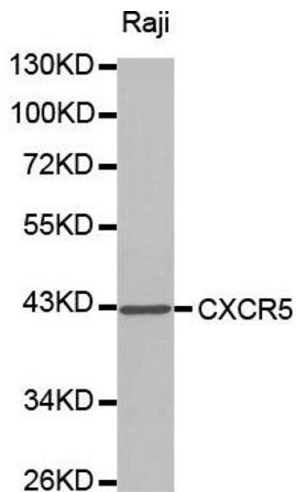
Precaution of Use: This product contains Sodium azide: a POISONOUS AND HAZARDOUS SUBSTANCE which should be handled by trained staff only.

Handling Advice: Avoid repeated freeze/thaw cycles.

Storage: -20 °C

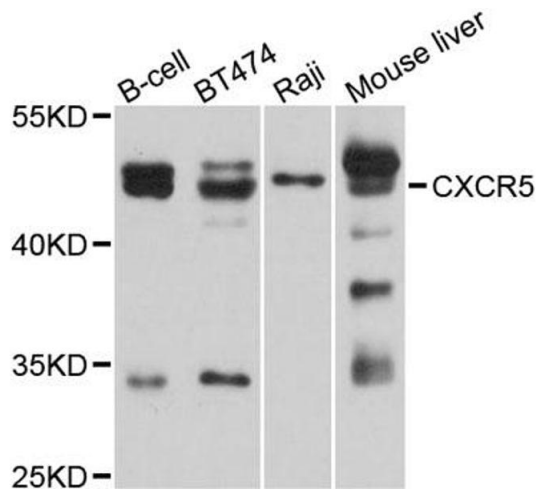
Storage Comment: Store at -20°C.

Images



Western Blotting

Image 1. Western blot analysis of extracts of Raji cell lines, using CXCR5 antibody.



Western Blotting

Image 2. Western blot analysis of extracts of various cell lines, using CXCR5 antibody (ABIN2736602) at 1:1000 dilution. Secondary antibody: HRP Goat Anti-Rabbit IgG (H+L) at 1:10000 dilution. Lysates/proteins: 25ug per lane. Blocking buffer: 3% nonfat dry milk in TBST. Detection: ECL Basic Kit. Exposure time: 10s.