



Datasheet for ABIN2738469
anti-Actin-Like 6B antibody (AA 42-70)



[Go to Product page](#)

1 Image

Overview

Quantity:	200 µL
Target:	Actin-Like 6B (ACTL6B)
Binding Specificity:	AA 42-70
Reactivity:	Human
Host:	Rabbit
Clonality:	Polyclonal
Conjugate:	This Actin-Like 6B antibody is un-conjugated
Application:	Western Blotting (WB), Immunohistochemistry (IHC), Flow Cytometry (FACS), Immunohistochemistry (Paraffin-embedded Sections) (IHC (p))

Product Details

Brand:	IHC-plus™
Specificity:	This ACTL6B antibody is generated from rabbits immunized with a KLH conjugated synthetic peptide between 42-70 amino acids from the N-terminal region of human ACTL6B.
Purification:	Protein A purified

Target Details

Target:	Actin-Like 6B (ACTL6B)
Alternative Name:	BAF53B / ACTL6B (ACTL6B Products)
Background:	Name/Gene ID: ACTL6B

Target Details

Synonyms: ACTL6B, Actin-related protein Baf53b, ACTL6, Actin-like 6B, Actin-like 6, ArpNalpha, BAF53B, BRG1-associated factor 53B, Actin-like protein 6B, HArpN alpha

Gene ID: 51412

Application Details

Application Notes: Approved: Flo (1:10 - 1:50), IHC, IHC-P (1:100), WB (1:1000)

Comment: Target Species of Antibody: Human

Restrictions: For Research Use only

Handling

Format: Liquid

Concentration: Lot specific

Buffer: PBS, 0.09 % sodium azide

Preservative: Sodium azide

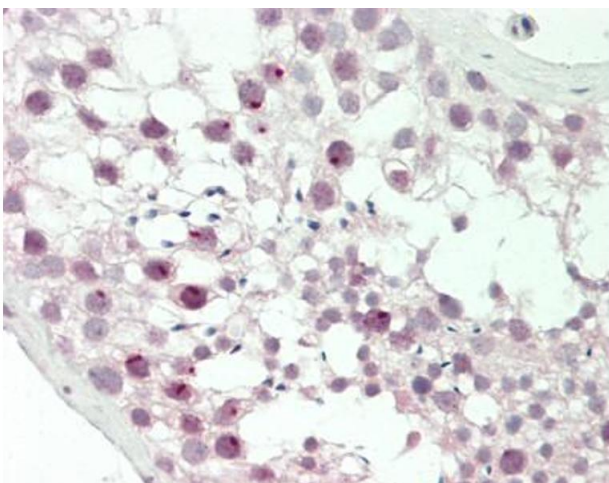
Precaution of Use: This product contains Sodium azide: a POISONOUS AND HAZARDOUS SUBSTANCE which should be handled by trained staff only.

Storage: 4 °C, -20 °C

Storage Comment: Maintain refrigerated at 2-8°C for up to 6 months. For long term storage store at -20°C.

Expiry Date: 6 months

Images



Immunohistochemistry (Paraffin-embedded Sections)

Image 1. Human Testis: Formalin-Fixed, Paraffin-Embedded (FFPE)