

Datasheet for ABIN2738746
anti-CRLS1 antibody (AA 107-156)[Go to Product page](#)

1 Image

Overview

Quantity:	50 µg
Target:	CRLS1 (CLS)
Binding Specificity:	AA 107-156
Reactivity:	Human, Mouse, Rat, Cow, Dog, Guinea Pig, Horse, Rabbit, Pig, Monkey, Bat
Host:	Rabbit
Clonality:	Polyclonal
Conjugate:	This CRLS1 antibody is un-conjugated
Application:	Western Blotting (WB), Immunohistochemistry (IHC), Immunohistochemistry (Paraffin-embedded Sections) (IHC (p))

Product Details

Brand:	IHC-plus™
Immunogen:	Synthetic peptide located between aa107-156 of human CRLS1 (Q9UJA2, NP_061968). Percent identity by BLAST analysis: Human, Chimpanzee, Gorilla, Gibbon, Galago, Marmoset, Mouse, Rat, Elephant, Dog, Bovine, Bat, Rabbit, Horse, Pig, Opossum, Guinea pig (100%), Turkey, Chicken, Platypus, Lizard, Nematode (92%), Xenopus (85%), Smelt, Stickleback (84%). Type of Immunogen: Synthetic peptide
Specificity:	Human CRLS1
Purification:	Immunoaffinity purified

Target Details

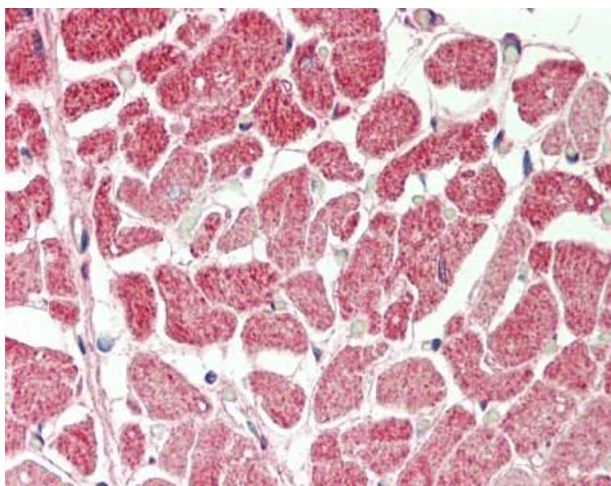
Target:	CRLS1 (CLS)
Alternative Name:	Cardiolipin Synthase / CRLS1 (CLS Products)
Background:	Name/Gene ID: CRLS1 Synonyms: CRLS1, Cardiolipin synthase, C20orf155, Cardiolipin synthase 1, CLS1, DJ967N21.6, GCD10, CLS, Protein GCD10 homolog
Gene ID:	54675
NCBI Accession:	NP_061968

Application Details

Application Notes:	Approved: IHC, IHC-P (10 µg/mL), WB (0.2 - 1 µg/mL) Usage: Western Blot: Suggested dilution at 1 µg/mL in 5 % skim milk / PBS buffer, and HRP conjugated anti-Rabbit IgG should be diluted in 1: 50,000 - 100,000 as secondary antibody.
Comment:	Target Species of Antibody: Human
Restrictions:	For Research Use only

Handling

Format:	Lyophilized
Reconstitution:	Distilled water
Concentration:	Lot specific
Buffer:	Lyophilized from PBS with 2 % sucrose
Handling Advice:	Avoid repeat freeze-thaw cycles.
Storage:	4 °C, -20 °C
Storage Comment:	Long term: -20°C, the use of 50% glycerol is recommended if storing aliquots in -20°C for long term use (up to 1 year) Short term (less than 1 week): 4°C. Avoid freeze-thaw cycles.



Immunohistochemistry (Paraffin-embedded Sections)

Image 1. Human Heart: Formalin-Fixed, Paraffin-Embedded (FFPE). This image was taken for the unconjugated form of this product. Other forms have not been tested.