



[Go to Product page](#)

Datasheet for ABIN2739910
anti-CEP44 antibody (AA 278-307)

1 Image

Overview

Quantity:	200 µL
Target:	CEP44
Binding Specificity:	AA 278-307
Reactivity:	Human
Host:	Rabbit
Clonality:	Polyclonal
Conjugate:	This CEP44 antibody is un-conjugated
Application:	Western Blotting (WB), Immunohistochemistry (IHC), Immunohistochemistry (Paraffin-embedded Sections) (IHC (p))

Product Details

Brand:	IHC-plus™
Specificity:	This K1712 antibody is generated from rabbits immunized with a KLH conjugated synthetic peptide between 278-307 amino acids from the C-terminal region of human K1712.
Purification:	Protein A purified

Target Details

Target:	CEP44
Alternative Name:	CEP44 / KIAA1712 (CEP44 Products)
Background:	Name/Gene ID: CEP44

Target Details

Synonyms: CEP44, Centrosomal protein 44 kDa, Centrosomal protein of 44 kDa, KIAA1712, PS1TP3

Gene ID: 80817

Application Details

Application Notes: Approved: IHC, IHC-P (1:100), WB (1:1000)

Comment: Target Species of Antibody: Human

Restrictions: For Research Use only

Handling

Format: Liquid

Concentration: Lot specific

Buffer: PBS, 0.09 % sodium azide

Preservative: Sodium azide

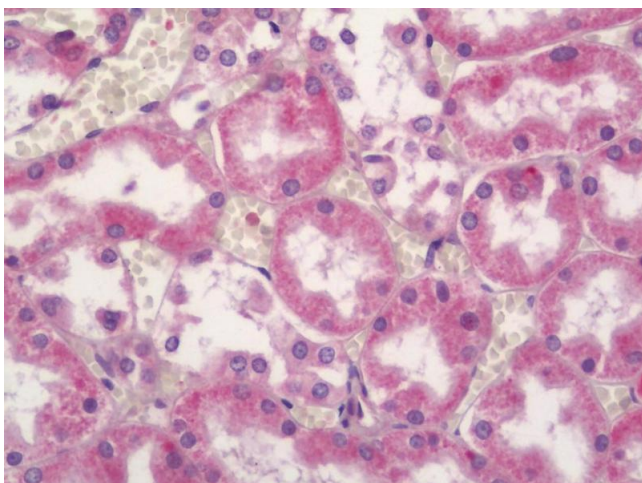
Precaution of Use: This product contains Sodium azide: a POISONOUS AND HAZARDOUS SUBSTANCE which should be handled by trained staff only.

Storage: 4 °C, -20 °C

Storage Comment: Maintain refrigerated at 2-8°C for up to 6 months. For long term storage store at -20°C.

Expiry Date: 6 months

Images



Immunohistochemistry (Paraffin-embedded Sections)

Image 1. Human Kidney: Formalin-Fixed, Paraffin-Embedded (FFPE)