



Datasheet for ABIN2739960

anti-CKB antibody



[Go to Product page](#)

1 Image

Overview

Quantity:	0.1 mg
Target:	CKB
Reactivity:	Human
Host:	Goat
Clonality:	Polyclonal
Application:	Immunohistochemistry (IHC), Immunohistochemistry (Paraffin-embedded Sections) (IHC (p))

Product Details

Brand:	IHC-plus™
Immunogen:	Purified human brain CKBB.
Specificity:	Specific for human CK-BB. 50 % cross-reaction with CK-MB
Purification:	Purified IgG

Target Details

Target:	CKB
Alternative Name:	CKB / Creatine Kinase BB (CKB Products)
Background:	Name/Gene ID: CKB Synonyms: CKB, CKBB, Creatine kinase-B, Creatine kinase, b chain, B-CK, Creatine kinase B chain, Creatine kinase B-type, Creatine kinase, brain
Gene ID:	1152

Application Details

Application Notes: Approved: IHC, IHC-P (5 µg/mL)

Comment: Target Species of Antibody: Human

Restrictions: For Research Use only

Handling

Format: Liquid

Concentration: Lot specific

Buffer: PBS, pH 7.4, 0.05 % sodium azide

Preservative: Sodium azide

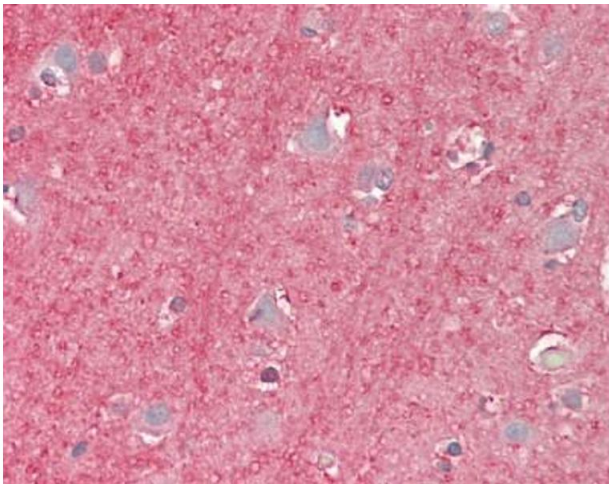
Precaution of Use: This product contains Sodium azide: a POISONOUS AND HAZARDOUS SUBSTANCE which should be handled by trained staff only.

Handling Advice: avoid freeze thaw cycles

Storage: 4 °C, -20 °C

Storage Comment: Short term 4°C, long term aliquot and store at -20°C, avoid freeze-thaw cycles.

Images



Immunohistochemistry (Paraffin-embedded Sections)

Image 1. Human Brain, Cortex: Formalin-Fixed, Paraffin-Embedded (FFPE)