



[Go to Product page](#)

Datasheet for ABIN2740578

anti-Endothelin 3 antibody (AA 1-238)

1 Image

Overview

Quantity:	50 µg
Target:	Endothelin 3 (EDN3)
Binding Specificity:	AA 1-238
Reactivity:	Human
Host:	Mouse
Clonality:	Monoclonal
Conjugate:	This Endothelin 3 antibody is un-conjugated
Application:	Western Blotting (WB), ELISA, Immunohistochemistry (IHC), Immunoprecipitation (IP), Immunohistochemistry (Paraffin-embedded Sections) (IHC (p))

Product Details

Brand:	IHC-plus™
Immunogen:	EDN3 (AAH08876, aa1-238 full-length recombinant protein with GST tag. MW of the GST tag alone is 26 KDa. Type of Immunogen: GST fusion protein
Clone:	2A6-2A4
Isotype:	IgG1 kappa
Specificity:	Human Endothelin 3 / EDN3
Purification:	Purified from ascites by Protein A

Target Details

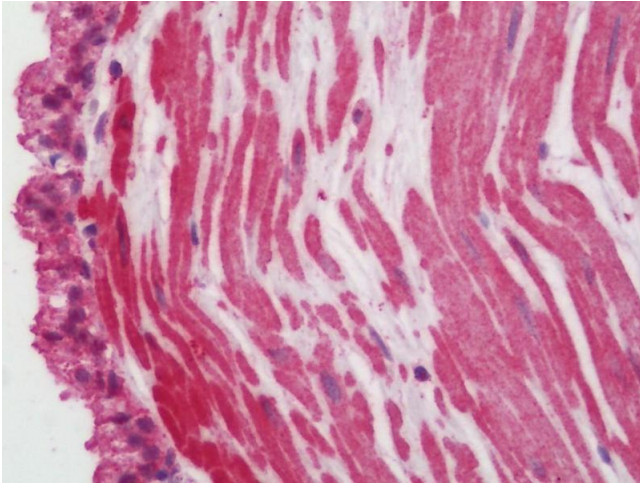
Target:	Endothelin 3 (EDN3)
Alternative Name:	Endothelin 3 / EDN3 (EDN3 Products)
Background:	Name/Gene ID: EDN3 Family: Hormone Synonyms: EDN3, Endothelin-3, ET3, Endothelin 3, Preproendothelin-3, WS4B, ET-3, HSCR4, PPET3
Gene ID:	1908
Pathways:	Hormone Transport , Negative Regulation of Hormone Secretion , Regulation of Systemic Arterial Blood Pressure by Hormones

Application Details

Application Notes:	Approved: ELISA, IHC, IHC-P (10 µg/mL), IP, WB Usage: Sandwich ELISA: Recombinant protein. Western Blot: Cell lysate, Transfected lysate, Recombinant protein.
Comment:	Target Species of Antibody: Human
Restrictions:	For Research Use only

Handling

Format:	Liquid
Concentration:	Lot specific
Buffer:	PBS, pH 7.4.
Handling Advice:	Aliquot to avoid repeated freezing and thawing.
Storage:	-20 °C
Storage Comment:	Store at -20°C or lower. Aliquot to avoid freeze-thaw cycles.



Immunohistochemistry (Paraffin-embedded Sections)

Image 1. Human Prostate: Formalin-Fixed, Paraffin-Embedded (FFPE)