

Datasheet for ABIN2740760
anti-F-Actin antibody (N-Term)[Go to Product page](#)

1 Image

Overview

Quantity:	50 µg
Target:	F-Actin
Binding Specificity:	N-Term
Reactivity:	Human, Mouse, Rat, Rabbit
Host:	Mouse
Clonality:	Monoclonal
Conjugate:	This F-Actin antibody is un-conjugated
Application:	Flow Cytometry (FACS), Western Blotting (WB), ELISA, Immunohistochemistry (Frozen Sections) (IHC (fro)), Immunohistochemistry (IHC), Immunohistochemistry (Paraffin-embedded Sections) (IHC (p))

Product Details

Brand:	IHC-plus™
Immunogen:	Human monocytes and U937 cell line. Type of Immunogen: Cells
Isotype:	IgM
Specificity:	Recognizes human Filamentous Actin. Binds to the N-terminal region of actin, but not to the extreme N-terminal 40 amino acids. In tissue sections the antibody stains the cytoplasm of macrophages strongly and gives granular, localized nuclear staining of all cell types. Species cross-reactivity: Rabbit.

Product Details

Purification:	Purified
---------------	----------

Target Details

Target:	F-Actin
---------	---------

Alternative Name:	F Actin (F-Actin Products)
-------------------	--

Application Details

Application Notes:	Approved: ELISA (1:5), Flo (1:5), IHC, IHC-Fr, IHC-P (15 µg/mL), WB
--------------------	---

Usage: Suitable for use in Flow Cytometry, Immunohistochemistry, ELISA and Western Blot.
Flow Cytometry: 1:5. Immunohistochemistry: frozen sections. ELISA: 1:5. Positive control:
Gastrointestinal tissue.

Comment:	Target Species of Antibody: Human
----------	-----------------------------------

Restrictions:	For Research Use only
---------------	-----------------------

Handling

Format:	Liquid
---------	--------

Concentration:	Lot specific
----------------	--------------

Buffer:	PBS, pH 7.4, 0.09 % sodium azide.
---------	-----------------------------------

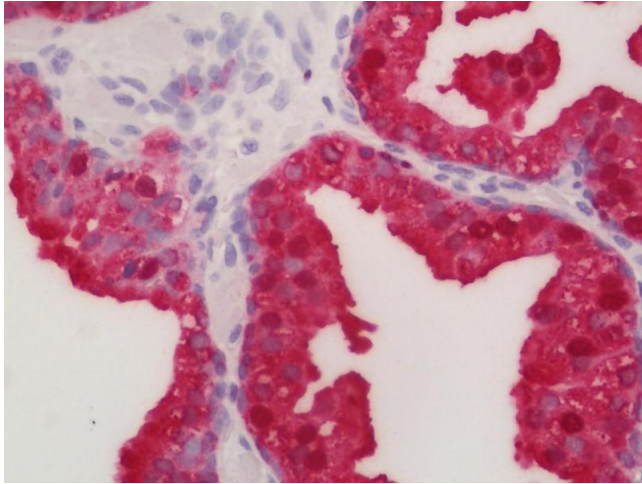
Preservative:	Sodium azide
---------------	--------------

Precaution of Use:	This product contains Sodium azide: a POISONOUS AND HAZARDOUS SUBSTANCE which should be handled by trained staff only.
--------------------	--

Handling Advice:	Avoid freeze-thaw cycles.
------------------	---------------------------

Storage:	4 °C, -20 °C
----------	--------------

Storage Comment:	Short term: 4°C. Long term: Store at -20°C. Avoid freeze-thaw cycles.
------------------	---



Immunohistochemistry (Paraffin-embedded Sections)

Image 1. Human Prostate: Formalin-Fixed, Paraffin-Embedded (FFPE)