



[Go to Product page](#)

Datasheet for ABIN2741023

## anti-GABARAPL1 antibody (AA 31-80)

### 1 Image

#### Overview

Quantity:	50 µg
Target:	GABARAPL1
Binding Specificity:	AA 31-80
Reactivity:	Human, Rat, Mouse, Dog, Guinea Pig, Horse, Rabbit, Cow, Pig, Hamster, Monkey, Chicken, Xenopus laevis, Bat, Drosophila melanogaster, Insect
Host:	Rabbit
Clonality:	Polyclonal
Conjugate:	This GABARAPL1 antibody is un-conjugated
Application:	Western Blotting (WB), Immunohistochemistry (IHC), Immunohistochemistry (Paraffin-embedded Sections) (IHC (p))

#### Product Details

Brand:	IHC-plus™
Immunogen:	Synthetic peptide located between aa31-80 of human GABARAPL1 (Q9H0R8-2). Percent identity by BLAST analysis: Human, Chimpanzee, Gorilla, Orangutan, Gibbon, Monkey, Galago, Marmoset, Mouse, Rat, Hamster, Elephant, Panda, Dog, Bovine, Bat, Rabbit, Horse, Pig, Opossum, Guinea pig, Chicken, Xenopus, Trout, Catfish, Salmon, Smelt, Sablefish, Stickleback, Medaka, Pike, Pufferfish, Sea squirt, Drosophila, Mosquito, Sea anemone (100%), Tick (92%), Nematode (85%).  Type of Immunogen: Synthetic peptide
Specificity:	Human GABARAPL1 / ATG8

## Product Details

---

Purification: Immunoaffinity purified

## Target Details

---

Target: GABARAPL1

Alternative Name: GABARAPL1 / ATG8 ([GABARAPL1 Products](#))

Background: Name/Gene ID: GABARAPL1

Synonyms: GABARAPL1, ATG8, ATG8L, APG8L, GABARAPL1-a, GEC-1, GEC1, APG8-LIKE, ATG8B

Gene ID: 23710

Pathways: [Autophagy](#)

## Application Details

---

Application Notes: Approved: IHC, IHC-P (10 µg/mL), WB (1 µg/mL)

Comment: Target Species of Antibody: Human

Restrictions: For Research Use only

## Handling

---

Format: Lyophilized

Reconstitution: Distilled water

Concentration: Lot specific

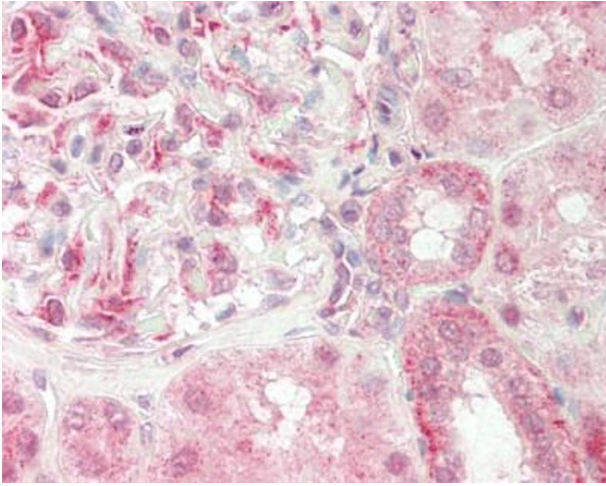
Buffer: Lyophilized from PBS, 2 % sucrose.

Handling Advice: Avoid repeat freeze-thaw cycles.

Storage: 4 °C, -20 °C

Storage Comment: Long term: -20°C, the use of 50% glycerol is recommended if storing aliquots in -20°C for long term use (up to 1 year)

Short term (less than 1 week): 4°C. Avoid freeze-thaw cycles.



#### Immunohistochemistry (Paraffin-embedded Sections)

**Image 1.** Human Kidney: Formalin-Fixed, Paraffin-Embedded (FFPE). This image was taken for the unconjugated form of this product. Other forms have not been tested.