



[Go to Product page](#)

Datasheet for ABIN2741101  
**anti-GGA1 antibody (AA 1-89)**

1 Image

### Overview

Quantity:	50 µg
Target:	GGA1
Binding Specificity:	AA 1-89
Reactivity:	Human
Host:	Mouse
Clonality:	Monoclonal
Conjugate:	This GGA1 antibody is un-conjugated
Application:	Western Blotting (WB), ELISA, Immunohistochemistry (IHC), Immunohistochemistry (Paraffin-embedded Sections) (IHC (p))

### Product Details

Brand:	IHC-plus™
Immunogen:	GGA1 (AAH29388, 1 a.a. ~ 89 a.a) full length recombinant protein with GST tag. MW of the GST tag alone is 26 KDa.  Type of Immunogen: Recombinant protein
Clone:	3F11
Isotype:	IgG
Specificity:	Human GGA1
Purification:	Purified from ascites by Protein A

## Target Details

---

Target:	GGA1
Alternative Name:	GGA1 ( <a href="#">GGA1 Products</a> )
Background:	Name/Gene ID: GGA1  Synonyms: GGA1
Gene ID:	26088

## Application Details

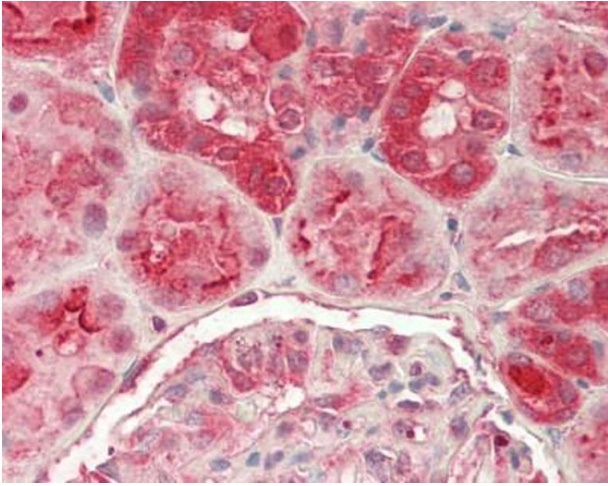
---

Application Notes:	Approved: ELISA, IHC, IHC-P (3 - 10 µg/mL), WB  Usage: Immunohistochemistry: Formalin-fixed paraffin-embedded sections. Sandwich ELISA: Recombinant protein. Western Blot: Cell lysate, Recombinant protein.
Comment:	Target Species of Antibody: Human
Restrictions:	For Research Use only

## Handling

---

Format:	Liquid
Concentration:	Lot specific
Buffer:	PBS, pH 7.4.
Handling Advice:	Aliquot to avoid repeated freezing and thawing.
Storage:	-20 °C
Storage Comment:	Store at -20°C or lower. Aliquot to avoid freeze-thaw cycles.



#### Immunohistochemistry (Paraffin-embedded Sections)

**Image 1.** Human Kidney: Formalin-Fixed, Paraffin-Embedded (FFPE)