

Datasheet for ABIN2741121
anti-Gltscr1 antibody (AA 1189-1238)



[Go to Product page](#)

1 Image

Overview

Quantity:	50 µg
Target:	Gltscr1
Binding Specificity:	AA 1189-1238
Reactivity:	Human, Mouse
Host:	Rabbit
Clonality:	Polyclonal
Conjugate:	This Gltscr1 antibody is un-conjugated
Application:	Western Blotting (WB), Immunohistochemistry (IHC), Immunohistochemistry (Paraffin-embedded Sections) (IHC (p))

Product Details

Brand:	IHC-plus™
Immunogen:	Synthetic peptide located between aa1189-1238 of mouse Gltscr1 (F8VPZ9, NP_001074887). Percent identity by BLAST analysis: Mouse (100%). Type of Immunogen: Synthetic peptide
Specificity:	Mouse GLTSCR1
Purification:	Immunoaffinity purified

Target Details

Target:	Gltscr1
---------	---------

Target Details

Alternative Name: GLTSCR1 ([Gltscr1 Products](#))

Background: Name/Gene ID: GLTSCR1

Synonyms: GLTSCR1

Gene ID: 29998

NCBI Accession: [NP_001074887](#)

Application Details

Application Notes: Approved: IHC, IHC-P (10 µg/mL), WB (1 µg/mL)

Comment: Target Species of Antibody: Mouse

Restrictions: For Research Use only

Handling

Format: Lyophilized

Reconstitution: Distilled water

Concentration: Lot specific

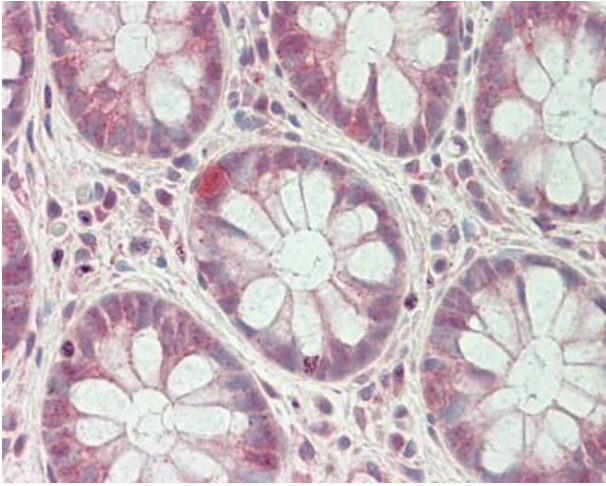
Buffer: Lyophilized from PBS with 2 % sucrose

Handling Advice: Avoid repeat freeze-thaw cycles.

Storage: 4 °C, -20 °C

Storage Comment: Long term: -20°C, the use of 50% glycerol is recommended if storing aliquots in -20°C for long term use (up to 1 year)

Short term (less than 1 week): 4°C. Avoid freeze-thaw cycles.



Immunohistochemistry (Paraffin-embedded Sections)

Image 1. Human Colon: Formalin-Fixed, Paraffin-Embedded (FFPE). This image was taken for the unconjugated form of this product. Other forms have not been tested.