



[Go to Product page](#)

Datasheet for ABIN2743178
anti-B7-H6 antibody (AA 389-415)

1 Image

Overview

Quantity:	200 µL
Target:	B7-H6 (NCR3LG1)
Binding Specificity:	AA 389-415
Reactivity:	Human
Host:	Rabbit
Clonality:	Polyclonal
Conjugate:	This B7-H6 antibody is un-conjugated
Application:	Western Blotting (WB), Immunohistochemistry (IHC), Immunohistochemistry (Paraffin-embedded Sections) (IHC (p))

Product Details

Brand:	IHC-plus™
Specificity:	This B7H6 antibody is generated from rabbits immunized with a KLH conjugated synthetic peptide between 389-415 amino acids from the C-terminal region of human B7H6.
Purification:	Protein A purified

Target Details

Target:	B7-H6 (NCR3LG1)
Alternative Name:	NCR3LG1 (NCR3LG1 Products)
Background:	Name/Gene ID: NCR3LG1

Target Details

Synonyms: NCR3LG1

Gene ID: 374383

Application Details

Application Notes: Approved: IHC, IHC-P (1:100), WB (1:1000)

Comment: Target Species of Antibody: Human

Restrictions: For Research Use only

Handling

Format: Liquid

Concentration: Lot specific

Buffer: PBS, 0.09 % sodium azide.

Preservative: Sodium azide

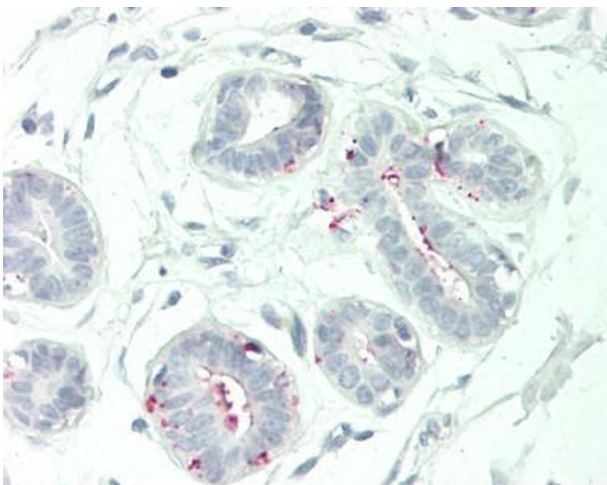
Precaution of Use: This product contains Sodium azide: a POISONOUS AND HAZARDOUS SUBSTANCE which should be handled by trained staff only.

Handling Advice: avoid freeze thaw cycles

Storage: 4 °C, -20 °C

Storage Comment: Short term 4°C, long term aliquot and store at -20°C, avoid freeze-thaw cycles.

Images



Immunohistochemistry (Paraffin-embedded Sections)

Image 1. Human Breast: Formalin-Fixed, Paraffin-Embedded (FFPE)