



[Go to Product page](#)

Datasheet for ABIN2743855

anti-PTGDS antibody

1 Image

Overview

Quantity:	0.1 mg
Target:	PTGDS
Reactivity:	Human
Host:	Rabbit
Clonality:	Polyclonal
Application:	Western Blotting (WB), Immunohistochemistry (IHC), ELISA, Immunohistochemistry (Paraffin-embedded Sections) (IHC (p))

Product Details

Brand:	IHC-plus™
Immunogen:	Recombinant Human Beta-Trace Protein. Type of Immunogen: Recombinant protein
Specificity:	Human PTGDS
Purification:	Immunoaffinity purified

Target Details

Target:	PTGDS
Alternative Name:	Prostaglandin D Synthase (PTGDS Products)
Background:	Name/Gene ID: PTGDS

Target Details

Synonyms: PTGDS, Beta-trace protein, LPGDS, PGD2, PGD2 synthase, PGDS, Prostaglandin D synthase, Prostaglandin-D2 synthase, L-PGDS, PDS, Cerebrin-28, PGDS2, Prostaglandin-H2 D-isomerase

Gene ID: 5730

Application Details

Application Notes: Approved: ELISA, IHC, IHC-P (5 µg/mL), WB

Comment: Target Species of Antibody: Human

Restrictions: For Research Use only

Handling

Format: Lyophilized

Reconstitution: Distilled water

Concentration: Lot specific

Buffer: Lyophilized from 50 mM phosphate buffer, pH 7.2, 100 mM NaCl, azide-free.

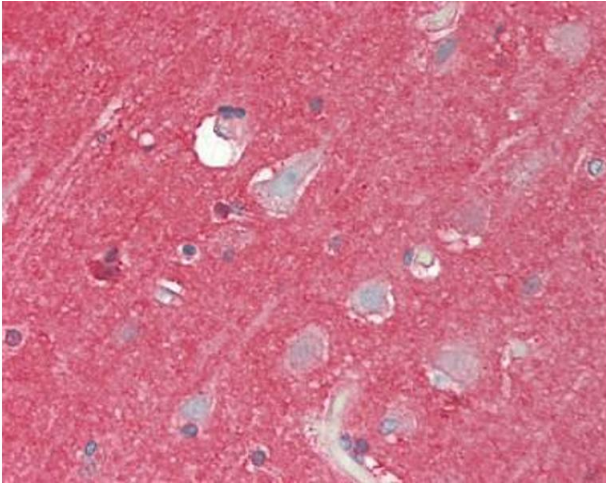
Preservative: Azide free

Precaution of Use: This product contains Sodium azide: a POISONOUS AND HAZARDOUS SUBSTANCE which should be handled by trained staff only.

Handling Advice: Avoid freeze-thaw cycles.

Storage: -20 °C,-80 °C

Storage Comment: Store lyophilized at -20°C. After reconstitution, aliquot and store at -80°C. Avoid freeze-thaw cycles.



Immunohistochemistry (Paraffin-embedded Sections)

Image 1. Human Brain, Cortex: Formalin-Fixed, Paraffin-Embedded (FFPE)