



[Go to Product page](#)

Datasheet for ABIN2744001
anti-RBPMS antibody (AA 38-87)

1 Image

Overview

| | |
|----------------------|--|
| Quantity: | 50 µg |
| Target: | RBPMS |
| Binding Specificity: | AA 38-87 |
| Reactivity: | Human, Rat, Mouse, Dog, Cow, Guinea Pig, Horse, Rabbit, Zebrafish (Danio rerio), Monkey, Bat, Chicken, Pig, Xenopus laevis |
| Host: | Rabbit |
| Clonality: | Polyclonal |
| Application: | Western Blotting (WB), Immunohistochemistry (IHC), Immunohistochemistry (Paraffin-embedded Sections) (IHC (p)) |

Product Details

| | |
|---------------|--|
| Brand: | IHC-plus™ |
| Immunogen: | Synthetic peptide located between aa38-87 of human RBPMS (Q93062, NP_001008710). Percent identity by BLAST analysis: Human, Chimpanzee, Gibbon, Monkey, Galago, Marmoset, Mouse, Rat, Elephant, Dog, Bovine, Bat, Rabbit, Horse, Pig, Opossum, Guinea pig, Turkey, Zebra finch, Chicken, Platypus, Xenopus, Salmon, Stickleback, Pike, Zebrafish (100%), Gorilla (85%). Type of Immunogen: Synthetic peptide |
| Isotype: | IgG |
| Specificity: | Human RBPMS |
| Purification: | Immunoaffinity purified |

Target Details

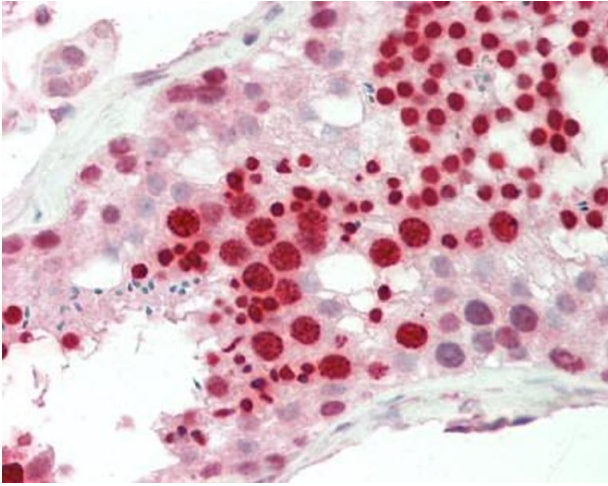
| | |
|-------------------|--|
| Target: | BPMS |
| Alternative Name: | BPMS / Hermes (BPMS Products) |
| Background: | Name/Gene ID: BPMS Synonyms: BPMS, Rbp-ms/type 5, BP-MS, HERMES |
| Gene ID: | 11030 |
| NCBI Accession: | NP_001008710 |

Application Details

| | |
|--------------------|---|
| Application Notes: | Approved: IHC, IHC-P (10 µg/mL), WB (0.2 - 1 µg/mL) Usage: ELISA titer using peptide based assay: 1:62500. Western Blot: Suggested dilution at 1 µg/mL in 5 % skim milk / PBS buffer, and HRP conjugated anti-Rabbit IgG should be diluted in 1:50000 - 100000 as second antibody. |
| Comment: | Target Species of Antibody: Human |
| Restrictions: | For Research Use only |

Handling

| | |
|------------------|---|
| Format: | Lyophilized |
| Reconstitution: | Distilled Water. |
| Concentration: | Lot specific |
| Buffer: | Lyophilized from PBS with 2 % sucrose |
| Handling Advice: | Avoid repeat freeze-thaw cycles. |
| Storage: | 4 °C,-20 °C |
| Storage Comment: | Long term: -20°C, the use of 50% glycerol is recommended if storing aliquots in -20°C for long term use (up to 1 year) Short term (less than 1 week): 4°C. Avoid freeze-thaw cycles. |



Immunohistochemistry (Paraffin-embedded Sections)

Image 1. Human Testis: Formalin-Fixed, Paraffin-Embedded (FFPE). This image was taken for the unconjugated form of this product. Other forms have not been tested.