

Datasheet for ABIN2744399

anti-SLC38A3 antibody (AA 31-80)[Go to Product page](#)**1** Image

Overview

Quantity:	50 µg
Target:	SLC38A3
Binding Specificity:	AA 31-80
Reactivity:	Human, Mouse, Cow, Horse, Pig, Rabbit, Monkey
Host:	Rabbit
Clonality:	Polyclonal
Conjugate:	This SLC38A3 antibody is un-conjugated
Application:	Western Blotting (WB), Immunohistochemistry (IHC), Immunohistochemistry (Paraffin-embedded Sections) (IHC (p))

Product Details

Brand:	IHC-plus™
Immunogen:	Synthetic peptide located between aa31-80 of human SLC38A3 (Q99624, NP_006832). Percent identity by BLAST analysis: Human, Chimpanzee, Monkey, Marmoset, Mouse, Elephant, Panda, Bovine, Rabbit, Horse, Pig (100%), Dog (92%), Rat, Guinea pig (85%). Type of Immunogen: Synthetic peptide
Isotype:	IgG
Specificity:	Human SLC38A3
Purification:	Immunoaffinity purified

Target Details

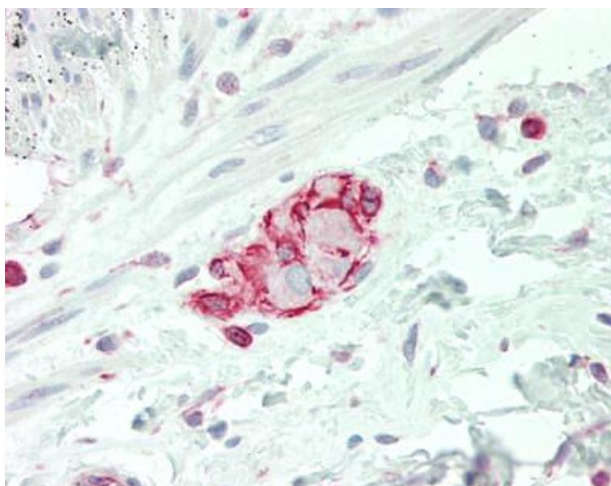
Target:	SLC38A3
Alternative Name:	SLC38A3 / SNAT3 (SLC38A3 Products)
Background:	Name/Gene ID: SLC38A3 Subfamily: Amino acid transporter Family: Transporter Synonyms: SLC38A3, G17, SN1, SNAT3
Gene ID:	10991
NCBI Accession:	NP_006832

Application Details

Application Notes:	Approved: IHC, IHC-P (10 µg/mL), WB (0.2 - 1 µg/mL) Usage: ELISA titer using peptide based assay: 1:1562500. Western Blot: Suggested dilution at 1.0 µg/mL in 5 % skim milk / PBS buffer, and HRP conjugated anti-Rabbit IgG should be diluted in 1:50000 - 100000 as second antibody.
Comment:	Target Species of Antibody: Human
Restrictions:	For Research Use only

Handling

Format:	Lyophilized
Reconstitution:	Distilled Water.
Concentration:	Lot specific
Buffer:	Lyophilized from PBS with 2 % sucrose
Handling Advice:	Avoid repeat freeze-thaw cycles.
Storage:	4 °C,-20 °C
Storage Comment:	Long term: -20°C, the use of 50% glycerol is recommended if storing aliquots in -20°C for long term use (up to 1 year) Short term (less than 1 week): 4°C. Avoid freeze-thaw cycles.



Immunohistochemistry (Paraffin-embedded Sections)

Image 1. Human Colon, Submucosal Plexus: Formalin-Fixed, Paraffin-Embedded (FFPE). This image was taken for the unconjugated form of this product. Other forms have not been tested.