



[Go to Product page](#)

Datasheet for ABIN2745316
anti-WDFY1 antibody (AA 42-91)

1 Image

Overview

Quantity:	50 µg
Target:	WDFY1
Binding Specificity:	AA 42-91
Reactivity:	Human, Rat, Mouse, Horse, Rabbit, Cow, Guinea Pig, Bat, Chicken
Host:	Rabbit
Clonality:	Polyclonal
Conjugate:	This WDFY1 antibody is un-conjugated
Application:	Western Blotting (WB), Immunohistochemistry (Paraffin-embedded Sections) (IHC (p)), Immunohistochemistry (IHC)

Product Details

Brand:	IHC-plus™
Immunogen:	Synthetic peptide located between aa42-91 of mouse Wdfy1 (Q9DAD3, NP_081333). Percent identity by BLAST analysis: Human, Gibbon, Monkey, Galago, Mouse, Elephant, Bovine, Bat, Rabbit, Horse, Opossum, Guinea pig, Turkey, Zebra finch, Chicken, Lizard (100%), Marmoset, Rat, Dog, Platypus, Stickleback (92%), Zebrafish (85%), Xenopus (84%). Type of Immunogen: Synthetic peptide
Specificity:	Mouse WDFY1
Purification:	Immunoaffinity purified

Target Details

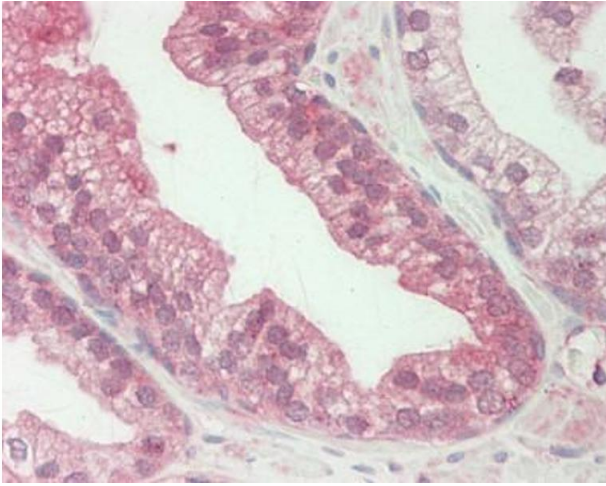
Target:	WDFY1
Alternative Name:	WDFY1 (WDFY1 Products)
Background:	Name/Gene ID: WDFY1 Synonyms: WDFY1, FENS-1, KIAA1435, ZFYVE17, WDF1
Gene ID:	57590
NCBI Accession:	NP_081333

Application Details

Application Notes:	Approved: IHC, IHC-P (10 µg/mL), WB (1 µg/mL)
Comment:	Target Species of Antibody: Mouse
Restrictions:	For Research Use only

Handling

Format:	Lyophilized
Reconstitution:	Distilled water
Concentration:	Lot specific
Buffer:	Lyophilized from PBS with 2 % sucrose
Handling Advice:	Avoid repeat freeze-thaw cycles.
Storage:	4 °C,-20 °C
Storage Comment:	Long term: -20°C, the use of 50% glycerol is recommended if storing aliquots in -20°C for long term use (up to 1 year) Short term (less than 1 week): 4°C. Avoid freeze-thaw cycles.



Immunohistochemistry (Paraffin-embedded Sections)

Image 1. Human Prostate: Formalin-Fixed, Paraffin-Embedded (FFPE). This image was taken for the unconjugated form of this product. Other forms have not been tested.