

Datasheet for ABIN2745403
anti-GDE1 antibody (AA 230-242)[Go to Product page](#)

1 Image

Overview

| | |
|----------------------|-------------------------------------|
| Quantity: | 100 µg |
| Target: | GDE1 |
| Binding Specificity: | AA 230-242 |
| Reactivity: | Mouse, Rat |
| Host: | Goat |
| Clonality: | Polyclonal |
| Conjugate: | This GDE1 antibody is un-conjugated |
| Application: | Western Blotting (WB), ELISA |

Product Details

| | |
|-------------------|---|
| Purpose: | GDE1 / MIR16 (aa230-242) |
| Sequence: | SLSHTGDGKP RYD |
| Isotype: | IgG |
| Cross-Reactivity: | Dog, Human, Mouse, Rat |
| Purification: | Purified from goat serum by ammonium sulphate precipitation followed by antigen affinity chromatography using the immunizing peptide. |
| Grade: | Verified |

Target Details

| | |
|---------|------|
| Target: | GDE1 |
|---------|------|

Target Details

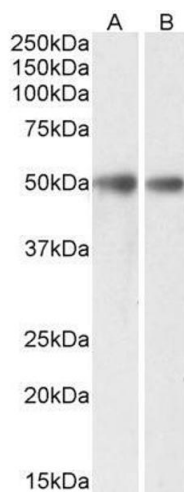
| | |
|-------------------|---|
| Alternative Name: | GDE1 (GDE1 Products) |
| Background: | GDE1, glycerophosphodiester phosphodiesterase 1, 363E6.2, MIR16, RGS16-interacting membrane protein, membrane interacting protein of RGS16, membrane-interacting protein of RGS16 |
| Gene ID: | 51573, 56209, 60418 |
| NCBI Accession: | NP_057725 |

Application Details

| | |
|--------------------|--|
| Application Notes: | Western Blot: Approx 50 kDa band observed in Mouse and Rat Brain lysates (calculated MW of 37.7 kDa according to NP_057725.1). The observed molecular weight corresponds to the glycosylated form. Recommended concentration: 0.3-1 µg/mL. Peptide ELISA: antibody detection limit dilution 1:128000. |
| Restrictions: | For Research Use only |

Handling

| | |
|--------------------|--|
| Format: | Liquid |
| Concentration: | 0.5 mg/mL |
| Buffer: | Supplied at 0.5 mg/mL in Tris saline, 0.02 % sodium azide, pH 7.3 with 0.5 % bovine serum albumin. |
| Preservative: | Sodium azide |
| Precaution of Use: | This product contains Sodium azide: a POISONOUS AND HAZARDOUS SUBSTANCE which should be handled by trained staff only. |
| Handling Advice: | Minimize freezing and thawing. |
| Storage: | -20 °C |
| Storage Comment: | Aliquot and store at -20°C, with minimal freeze/thawing. A working aliquot may be refrigerated at 4°C for a few weeks and still remain viable. |



Western Blotting

Image 1. ABIN2745403 (0.3µg/ml) staining of Mouse (A) and Rat (B) Brain lysates (35µg protein in RIPA buffer). Primary incubation was 1 hour. Detected by chemiluminescence.